



***Pathways to Resilience:
Managing Water for
the West Slope***

**Winter 2026 Regional Focus
of the Countywide Plenary
for Water**

March 5, 2026



Agenda

9:30 AM	Registration and Coffee
10:00 AM	Welcome
10:15 AM	Tabletop Discussion: Getting to Know Your Neighbor and Reflecting on Pre-Plenary Survey Findings
10:25 AM	Panel Perspectives: West Slope's Long-Term Economic Development
10:55 AM	Tabletop Discussion: Reflecting on the Economic Development Panel
11:15 AM	Case Study: Mammoth Lakes Sustainable Recreation Program
11:50 AM	Lunch
12:30 PM	Breakout Group Discussion: How Water Purveyors, Planners, and Communities Experience Water-Resource Related Challenges in the West Slope
1:15 PM	Preparing for the Water Blueprint: Approaches to Addressing Water-Resource Challenges While Supporting a Sustainable Economy
1:55 PM	Closing Remarks
2:00 PM	Adjourn





Plenary Welcome

REBECCA GUO

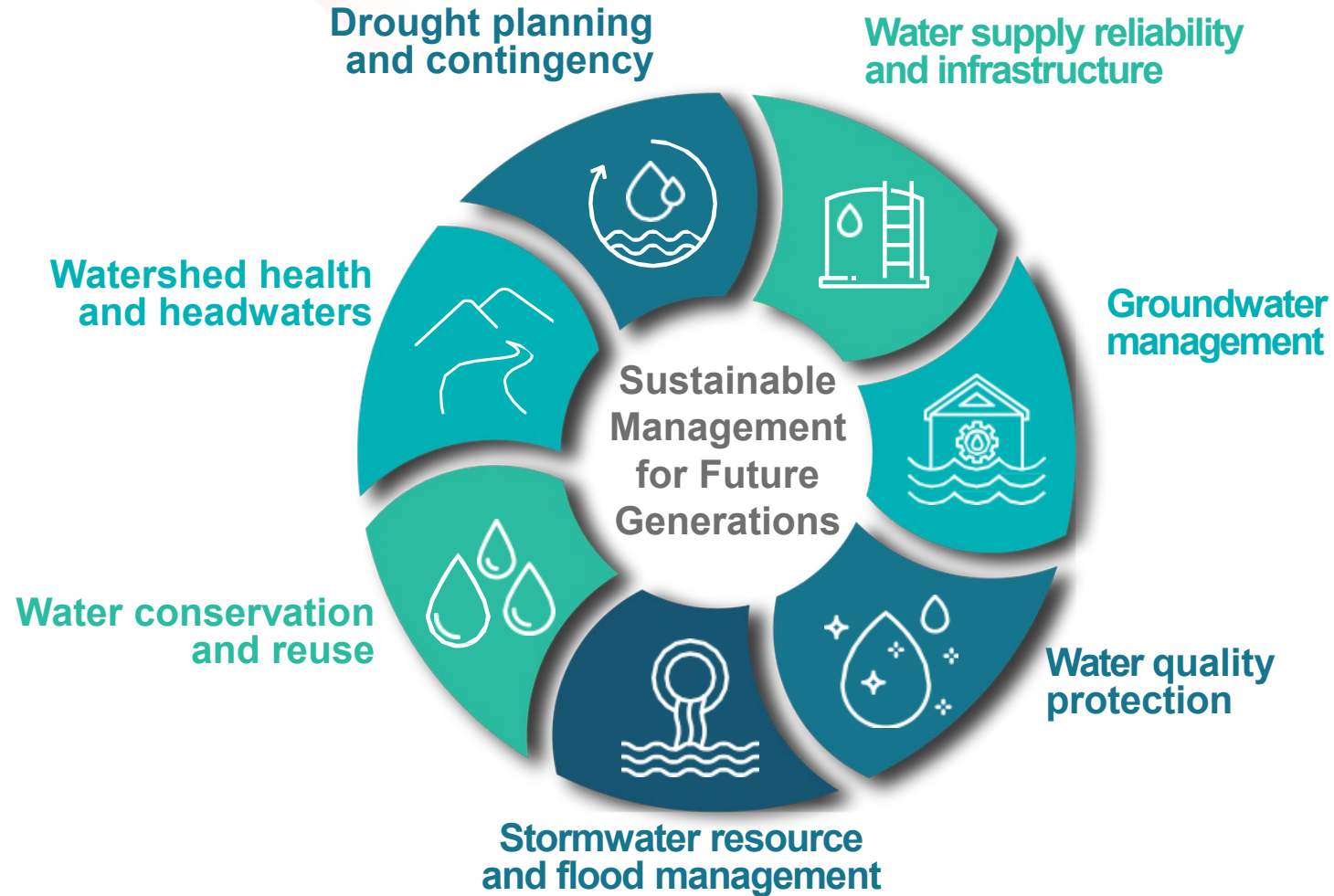
General Manager

El Dorado Water Agency

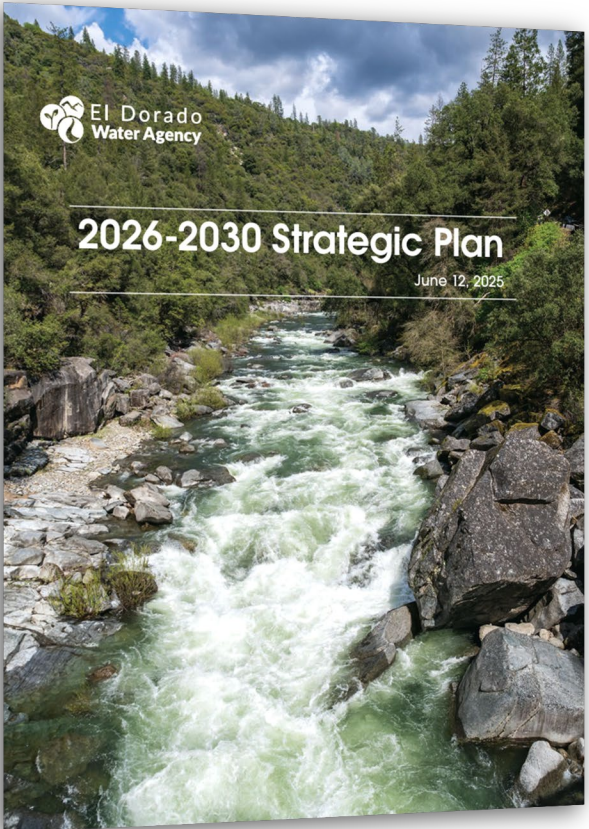


El Dorado Water Agency

Countywide Integrated Water Resource Management

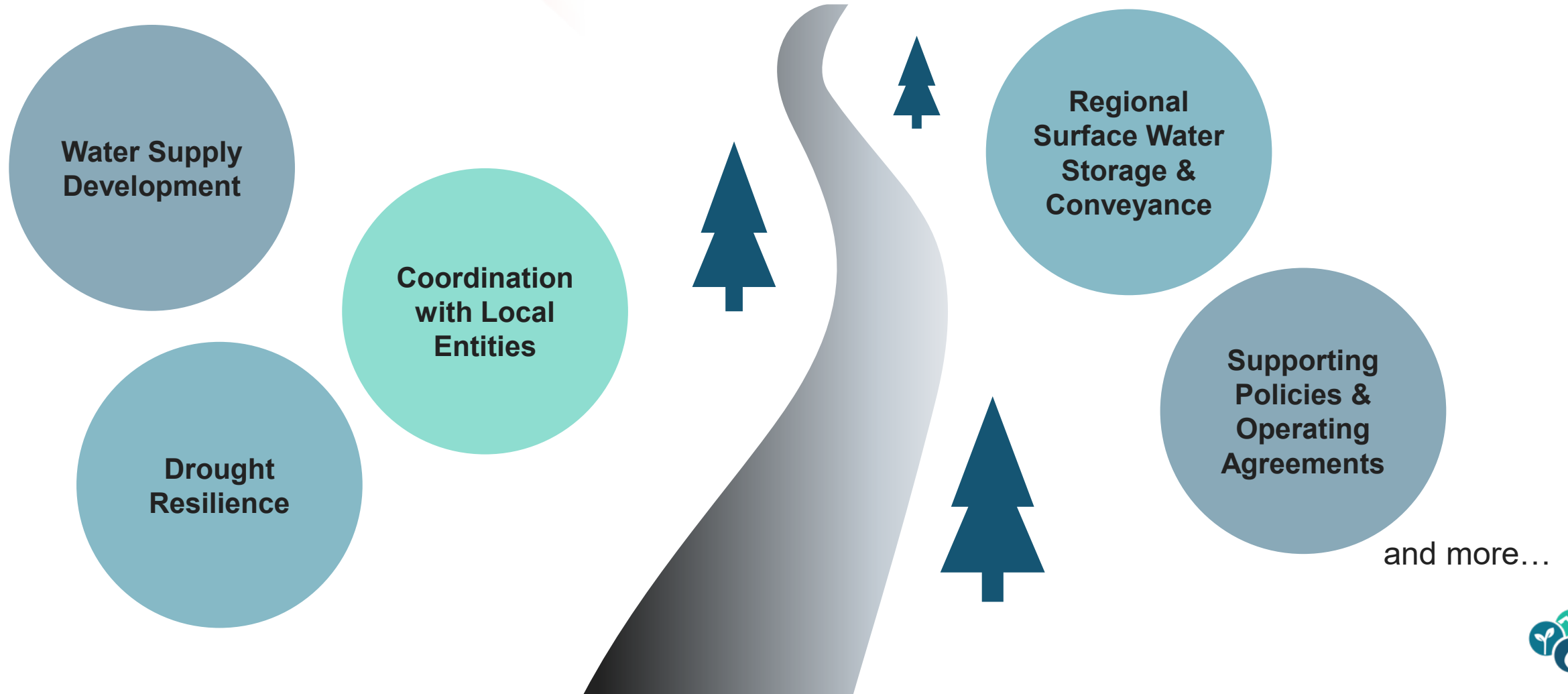


2026-2030 Strategic Plan



2026-2030 Strategic Plan Objective 2b:

Develop a long-term West Slope water blueprint and implementation roadmap





Tabletop Discussion

Let's get to know one another!

- **Introduce** yourselves to your table, and in the next few minutes, share:
- ***What do you love most about living and working in the West Slope?***

In about 10 minutes, we'll ask a few **volunteers** to share what you learned about one another.



Survey Findings

The Pre-Plenary survey asked you to assign your level of concern for the County's future in regards to 13 challenge areas:



Survey Findings

The survey prompted respondents to select the perspective that best represented their affiliation. These types were then grouped into three broad categories:

- Community (4 responses across 3 agencies): business/ economic/ agricultural interests
- Planners (5 responses across 4 agencies): County/ land use authorities
- Water Providers & Utilities (9 responses across 7 agencies): urban water purveyors, small water systems, utilities



Survey Findings

Increasing regulations & unfunded mandates.

Sustainable funding for long-term improvements.

Water affordability for health and human safety.

Long-term sustainable planning ahead of emergencies.

Cohesive, multibenefit economic development strategy.

Alternative water supplies for shortages.

Local ordinance alignment with economic development.

Future climate and water availability uncertainty.

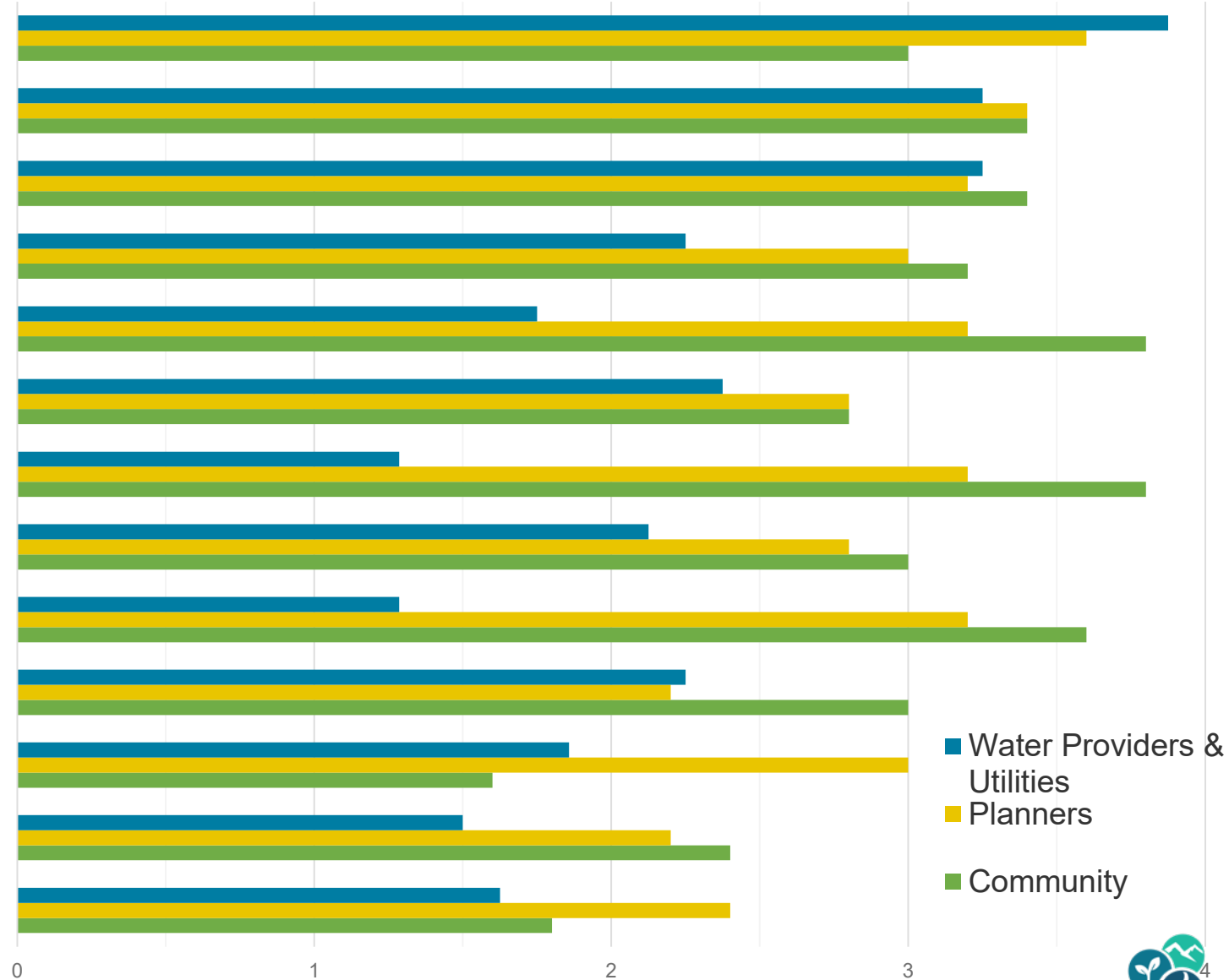
Application of General Plan land use policies.

Water supply infrastructure capacity.

Workforce with appropriate skillsets.

Urbanization.

Localized flooding emergencies.



Survey Findings

	Community	Planners	Water Providers & Utilities
1	Local ordinance alignment with economic development.	Increasing regulations & unfunded mandates.	Increasing regulations & unfunded mandates.
2	Cohesive, multi-benefit economic development strategy.	Sustainable funding for long-term improvements.	Water affordability for health and human safety.
3	Application of General Plan land use policies.	Water affordability for health and human safety.	Sustainable funding for long-term improvements.
4	Water affordability for health and human safety.	Cohesive, multi-benefit economic development strategy.	Alternative water supplies for shortages.
5	Sustainable funding for long-term improvements.	Local ordinance alignment with economic development.	Long-term sustainable planning ahead of emergencies.
6	Long-term sustainable planning ahead of emergencies.	Application of General Plan land use policies.	Water supply infrastructure capacity.

The full version of this table is provided in your Workbook.



Survey Findings

Several respondents shared additional concerns related to the County's future water resources using the write-in option:

- Aging infrastructure
- Aligning long-term revenue strategies for water providers to account for economic development, particularly working lands
- Price and affordability, particularly for new, agricultural producers
- Lack of space and funding for additional water storage
- Inadequate economic base to address challenges
- Expensive regulation requirements





Panel Perspectives: West Slope's Long-Term Economic Development

DEREK DELFINO

*Vineyard and Orchard Manager, **Delfino Farms***

BRYCE MILLER

*Senior Planner Executive Director of Business,
Marshall Hospital*

*Committee Member, **Strategic Economic
Enhancement Development (SEED) Committee***

KAREN GARNER

*Director, **El Dorado County Planning and
Building Department***

LAUREN HERNANDEZ

*Cofounder, **El Dorado Economic Generator &
Germination (Our EGG)***



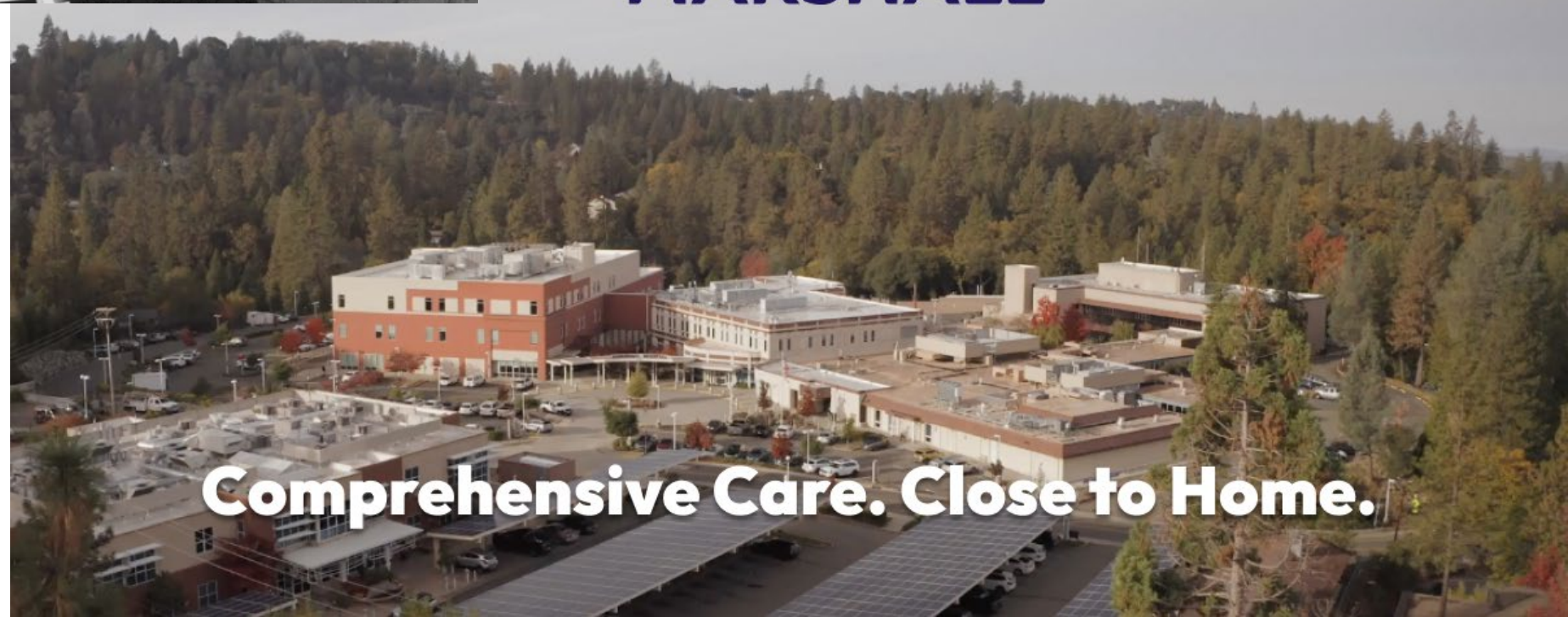


Panel Question 1

What is your agency/
organization/ community's
perspective on the ***future of
economic development*** in the
West Slope?









Short-Term Priorities

- 1.** Reevaluate Vacation Rental Caps and Buffer Zones
- 2.** Support Stable Funding for Tourism Related Organizations
- 3.** Launch a Tourism Business Improvement District (TBID) in Unincorporated Areas
- 4.** Expand Agricultural Lodging Opportunities
- 5.** Evaluate Rental Potential of County-Owned Sites
- 6.** Pilot an Entertainment Zone Designation

Mid-Term Priorities



- 1.** Outreach to identify business needs.
- 2.** Capital access & modernization support.
- 3.** Align workforce training with industry needs.
- 4.** Promote local businesses through community branding.
- 5.** Attract regional expansions & trade events.
- 6.** Implement performance-based incentives for retail and services.



Long-Term Priorities

- 1.** Target high-return industries aligned with County values.
- 2.** Maintain and publicize a site inventory with zoning and infrastructure details.
- 3.** Design incentives tied to property value growth.
- 4.** Invest in infrastructure and affordable housing.
- 5.** Support projects that improve land use and long-term livability.



El Dorado Economic **Generator & Germination**

A shared commitment to people, opportunity, and place.
ou EGG

Economic Ecosystem

An interconnected ecosystem where all essential components are dynamically linked in a cycle where the resilience of the whole is powered by the functionality + vitality of every part.



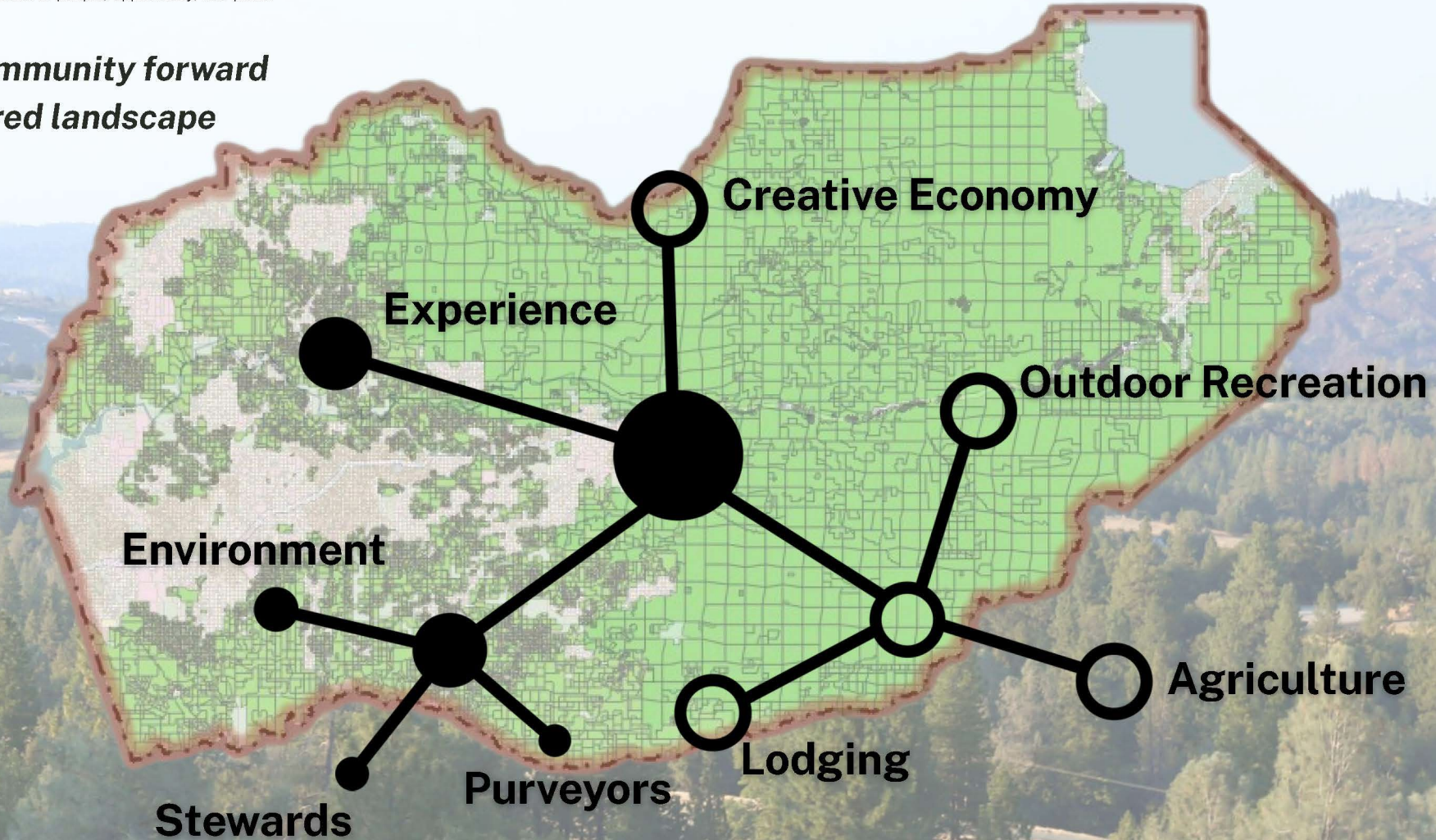


El Dorado Economic
Generator & Germination

A shared commitment to people, opportunity, and place.

our EGG

*Moving our community forward
through a shared landscape*





Panel Question 2

What would you consider to be the ***key characteristics of sustainable growth*** for the West Slope?



Tabletop Discussion:

Reflecting on the Economic Development Panel

- [10 min] Given the **key characteristics of sustainable growth** shared by the panel, which of the **water resource-related concerns** from the pre-plenary survey do you feel are the **most important to address**? How does your agency/ organization/ community **engage with these concerns**?
- [5 min] How does your agency/ organization/ community's work fit into the West Slope's **future economic development**?
- [5 min] Facilitators from 2-3 groups will share a highlight from their tabletop discussions.





Case Study: Mammoth Lakes Sustainable Recreation Program

JOHN WENTWORTH
CEO, Mammoth Lake Trails & Public Access Foundation

DILLON OSLEGER
Natural Resources & GIS Manager, Mammoth Lake Trails & Public Access Foundation





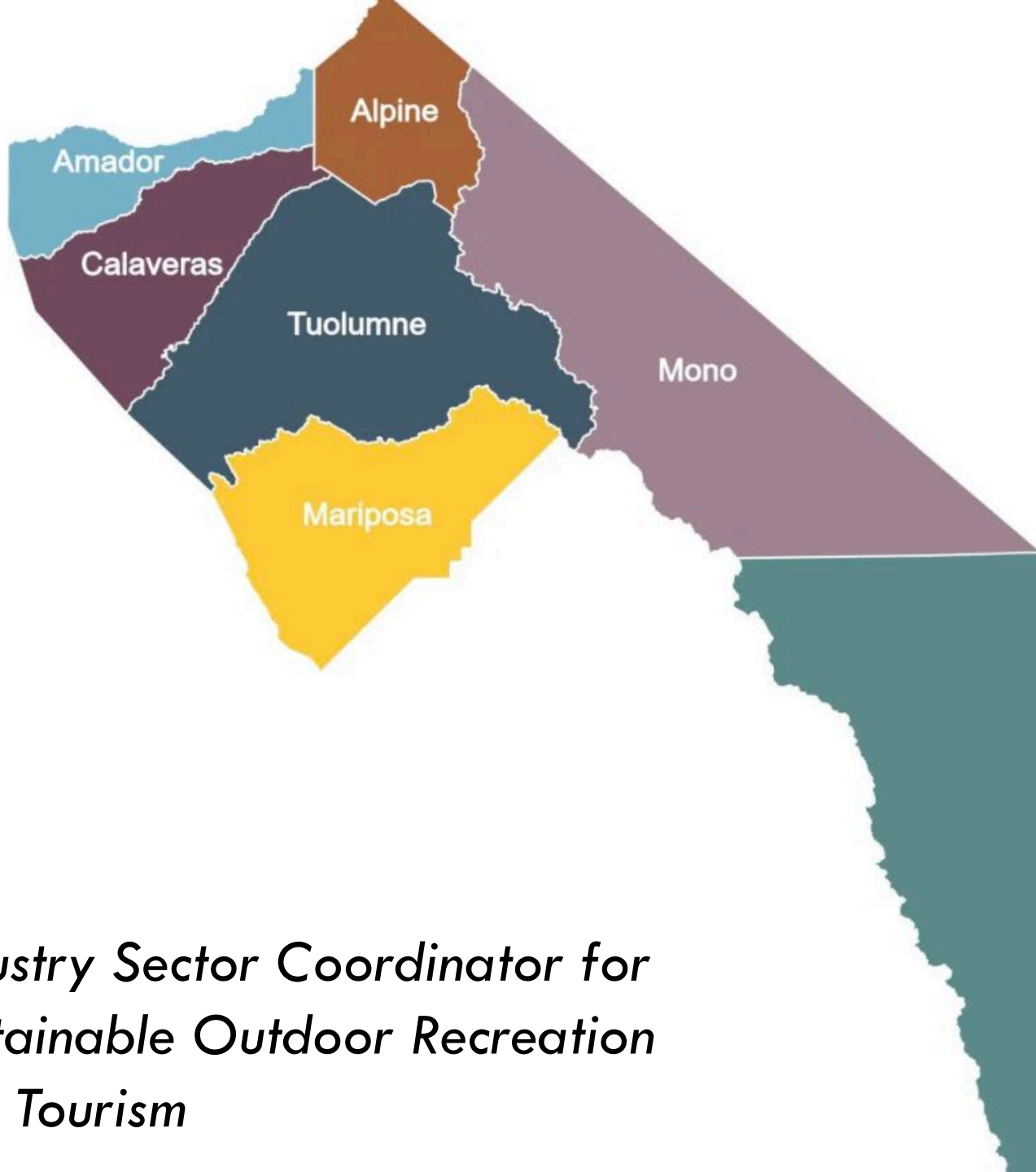
Bringing a Community Vision to Life

Ecosystem Services & Sustainable Outdoor Recreation



2004 EL DORADO COUNTY GENERAL PLAN
A PLAN FOR MANAGED GROWTH AND OPEN
ROADS; A PLAN FOR QUALITY
NEIGHBORHOODS AND TRAFFIC RELIEF

“Maintain and protect the County's natural beauty and environmental quality, vegetation, air and water quality, natural landscape features, cultural resource values, and maintain the rural character and lifestyle while ensuring the economic viability critical to promoting and sustaining community identity.”



**CALIFORNIA
JOBS FIRST**



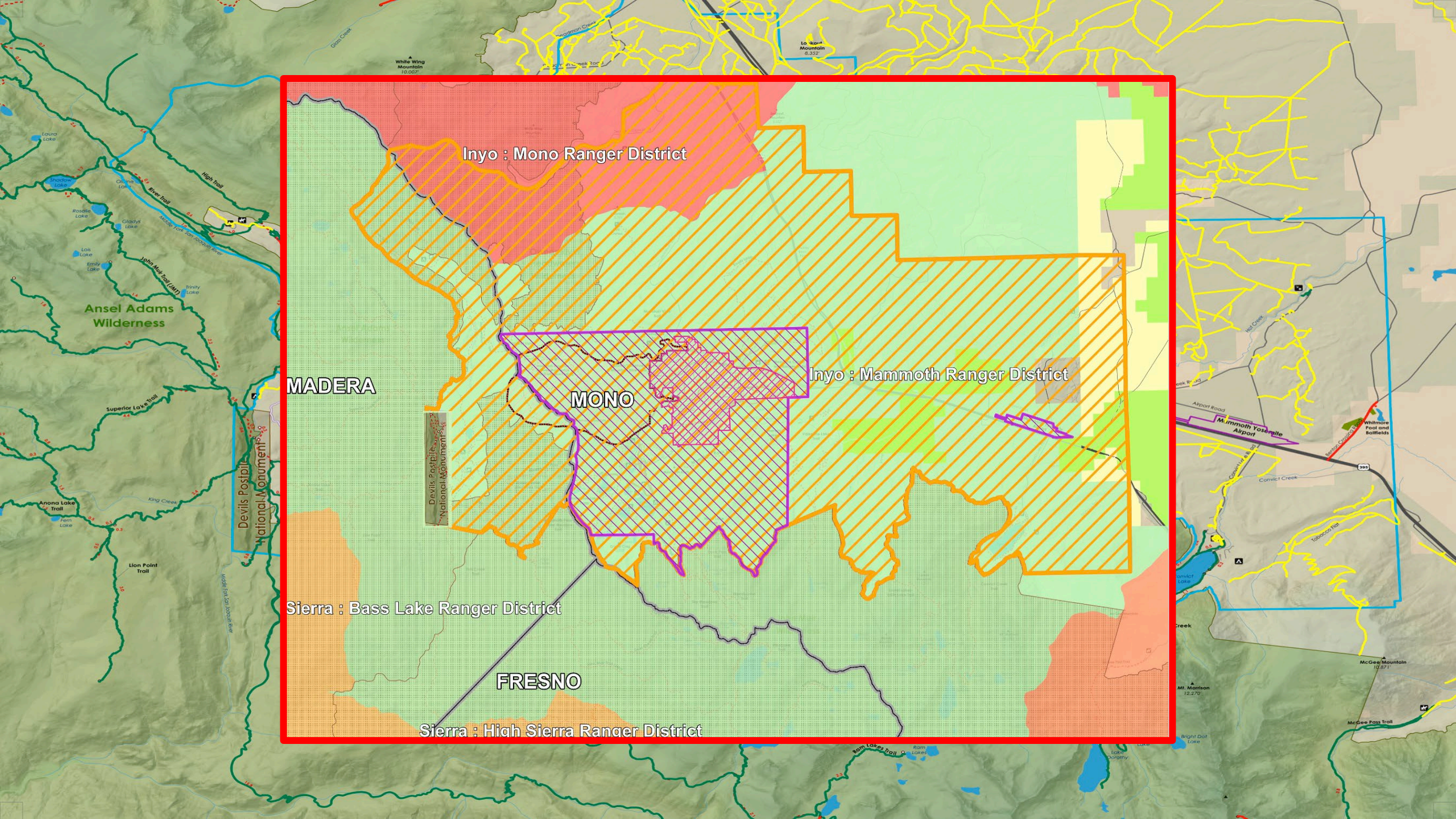
Sierra Region



*Industry Sector Coordinator for
Sustainable Outdoor Recreation
and Tourism*



Community Based - Mammoth Lakes



Inyo : Mono Ranger District

Inyo : Mammoth Ranger District

MADERA

MONO

Sierra : Bass Lake Ranger District

FRESNO

Sierra : High Sierra Ranger District

Ansel Adams Wilderness

Devils Postpile National Monument

Devils Postpile National Monument

Mammoth Yosemite Airport

Whitmore Pool and Ballfields

McCee Mountain 10,871'

Mt. Morrison 12,270'

McCee Pass Trail

White Wing Mountain 10,007'

Lo Kern Mountain 6,532'

TRAIL ETIQUETTE Help make the Mammoth Lakes Trail System a positive experience for everyone.

MOUNTAIN BIKERS

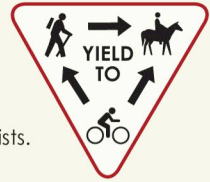
Yield right-of-way to all other users. Anticipate others and control your speed.

HIKERS AND RUNNERS

Stay to the right and pass on the left. Yield to equestrians and be aware of cyclists.

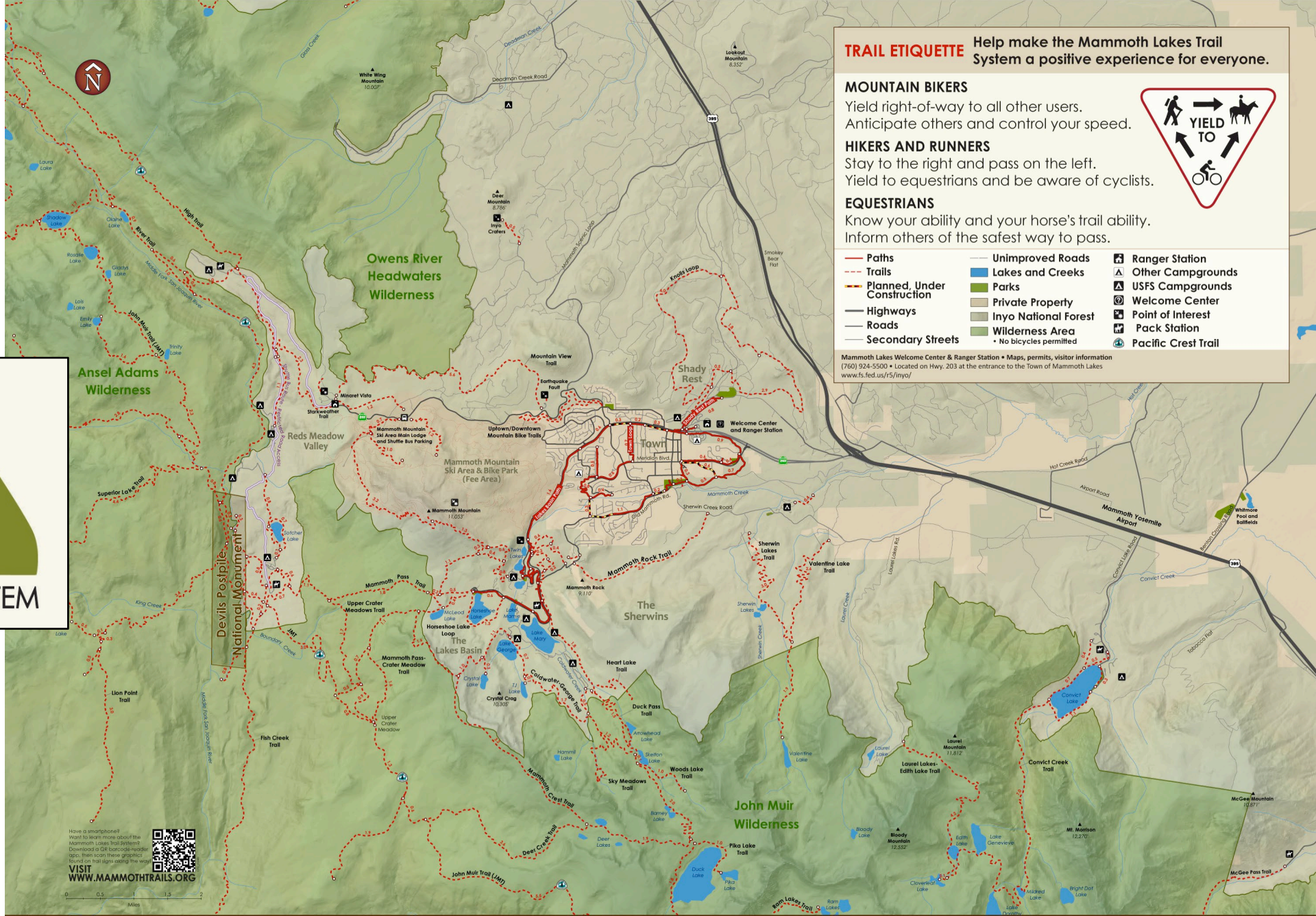
EQUESTRIANS

Know your ability and your horse's trail ability. Inform others of the safest way to pass.



- Paths
- - - Trails
- - - Planned, Under Construction
- Highways
- Roads
- Secondary Streets
- Unimproved Roads
- Lakes and Creeks
- Parks
- Private Property
- Inyo National Forest
- Wilderness Area
- * No bicycles permitted
- A Ranger Station
- A Other Campgrounds
- A USFS Campgrounds
- W Welcome Center
- P Point of Interest
- S Pack Station
- C Pacific Crest Trail

Mammoth Lakes Welcome Center & Ranger Station • Maps, permits, visitor information (760) 924-5500 • Located on Hwy. 203 at the entrance to the Town of Mammoth Lakes www.fs.fed.us/r5/inyo/

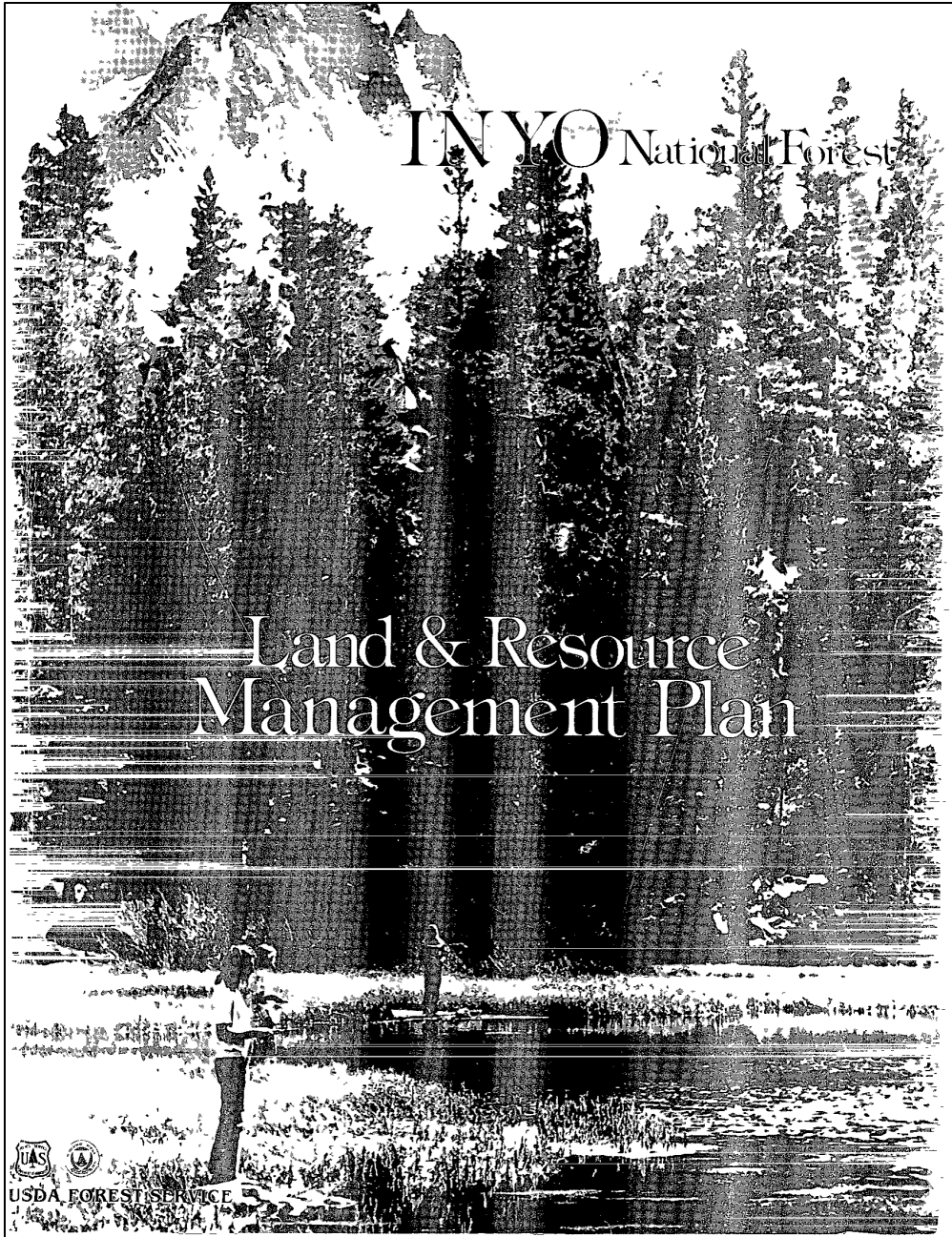


Have a smartphone? Want to learn more about the Mammoth Lakes Trail System? Download a QR barcode reader app. Then scan these graphics found on trail signs using the app!
VISIT
WWW.MAMMOTHTRAILS.ORG





USFS Land Management Planning



INYO National Forest

Land & Resource
Management Plan

USDA FOREST SERVICE

Inyo National Forest
Pacific Southwest Region USDA Forest Service

Land and Resource
Management
Plan

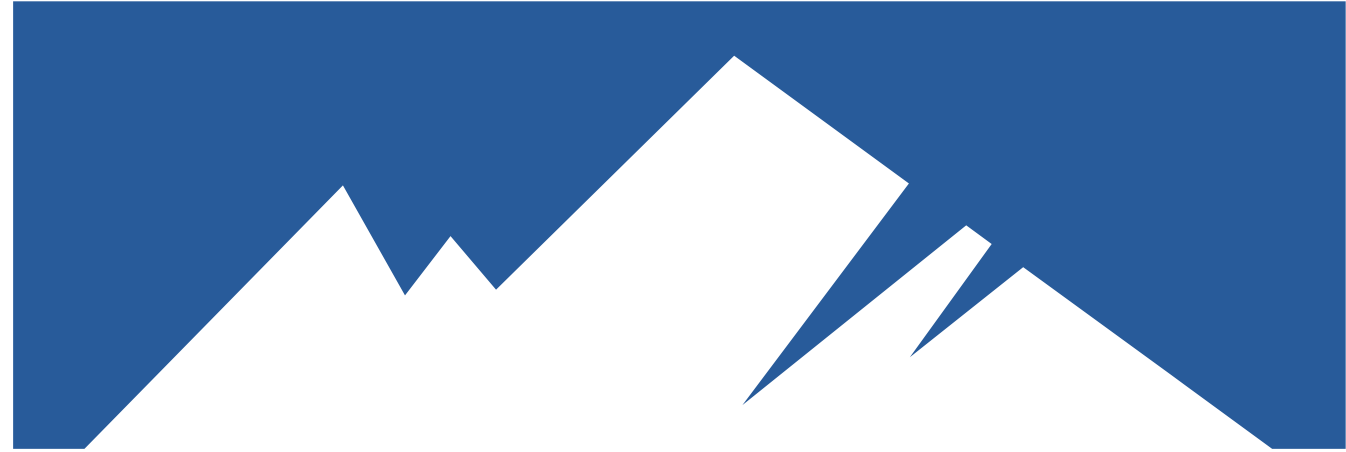
1 9 8 8

DENNIS W. MARTIN
Forest Supervisor

PAUL F. BARKER
Regional Forester



This Forest Plan establishes the management direction and associated long-range goals and objectives for the Inyo National Forest for the next ten to fifteen years.



EASTERN SIERRA
recreation collaborative





Jan 14, 2015 – Eastern Sierra Communities – Three Counties





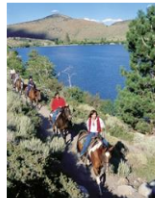
Eastern Sierra Recreation Collaborative Proposed Recreation Strategy

Prepared in Support of the
Inyo National Forest Management Plan Revision

January 26, 2015

<http://eastsierrarec.org>

<http://mltpa.org/advocacy/esrc-public-meeting-information>



Land Management Plan for the Inyo National Forest

Fresno, Inyo, Madera, Mono, and Tulare Counties, California;
Esmeralda and Mineral Counties, Nevada



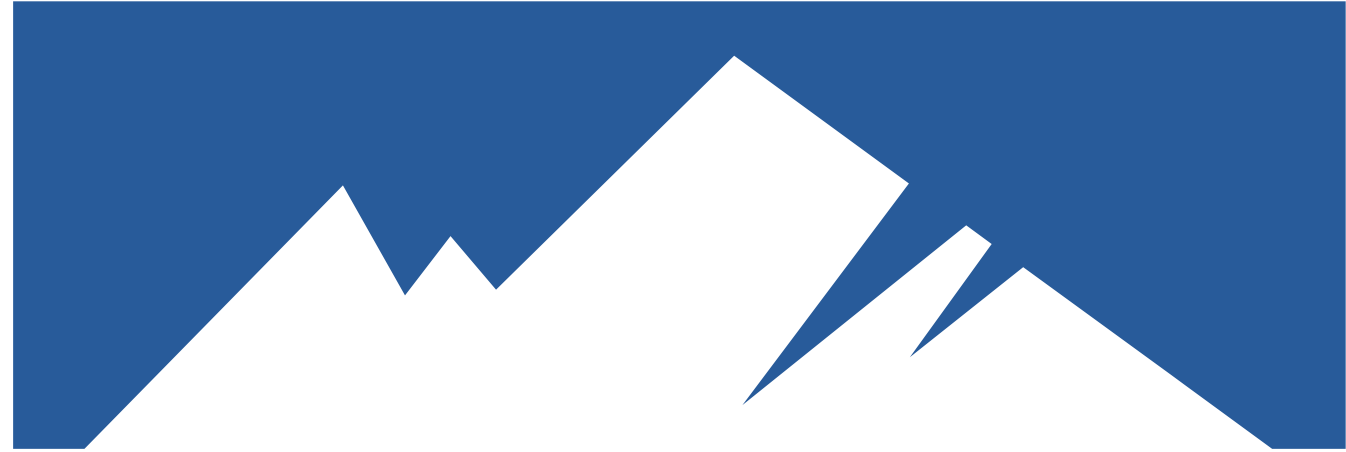
Forest Service

Pacific Southwest Region

R5-MB-303

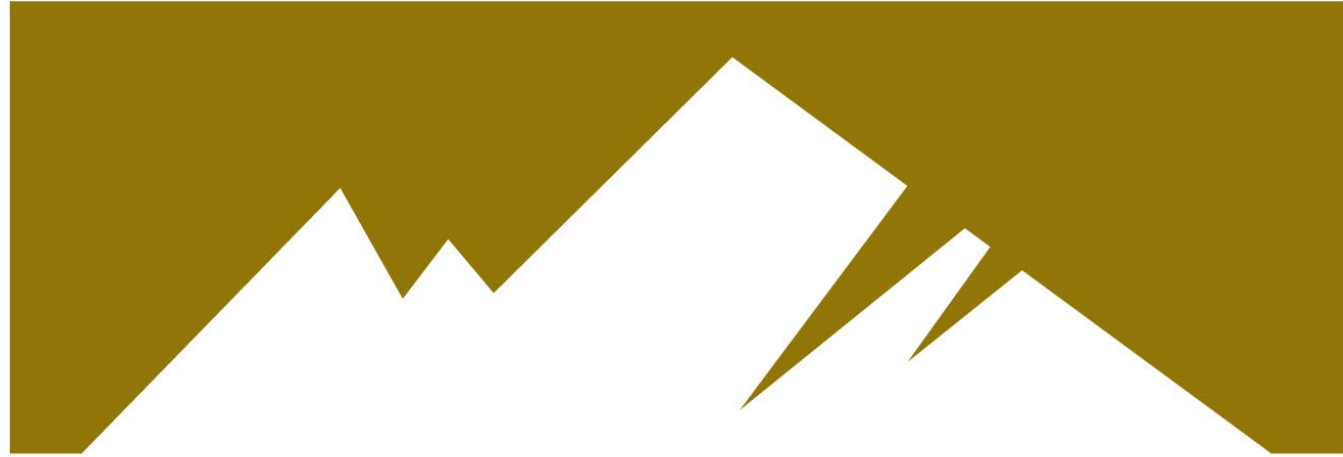
2018





EASTERN SIERRA
recreation collaborative

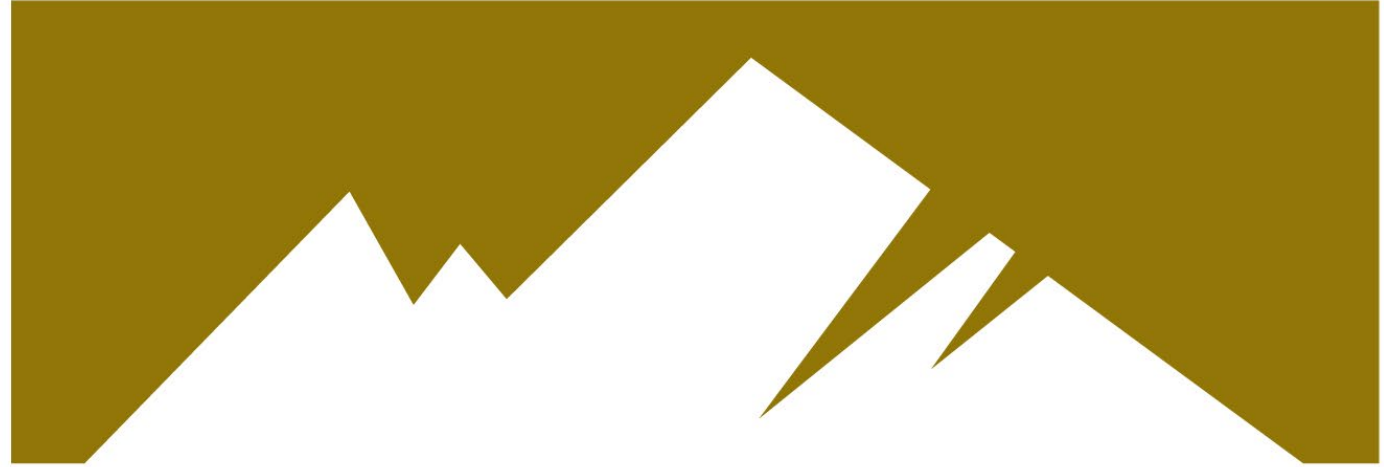




EASTERN SIERRA

Sustainable Recreation Partnership





EASTERN SIERRA

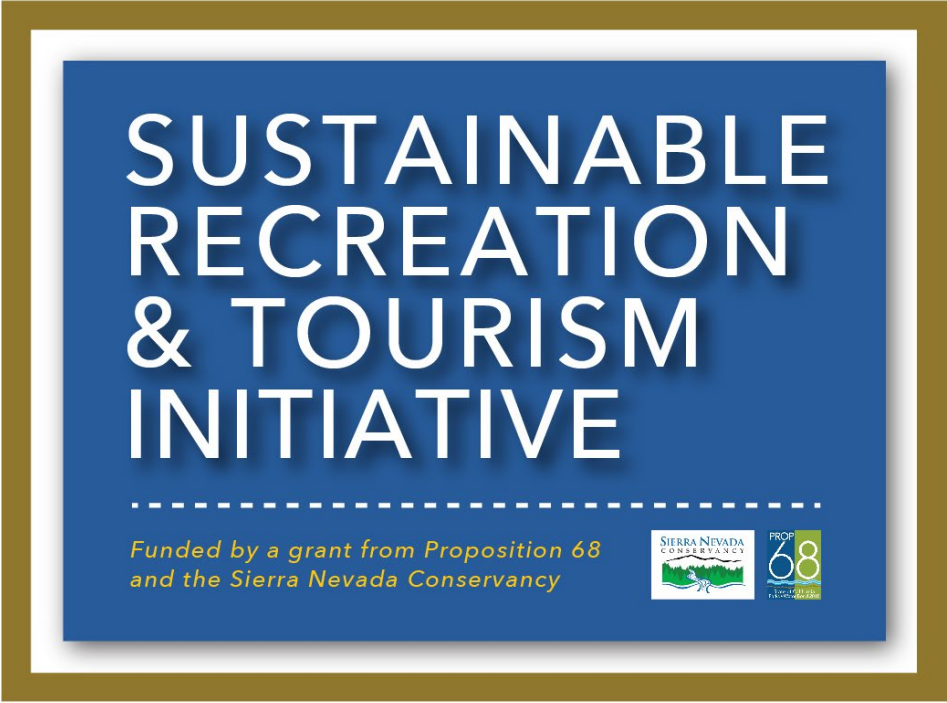
Sustainable Recreation Partnership







EASTERN SIERRA

Sustainable Recreation Partnership



SUSTAINABLE RECREATION & TOURISM INITIATIVE

*Funded by a grant from Proposition 68
and the Sierra Nevada Conservancy*

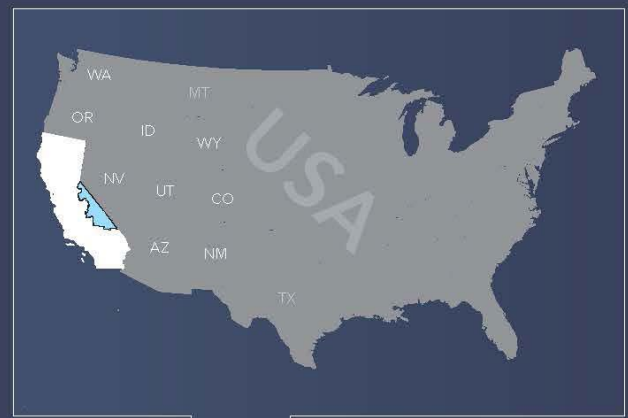


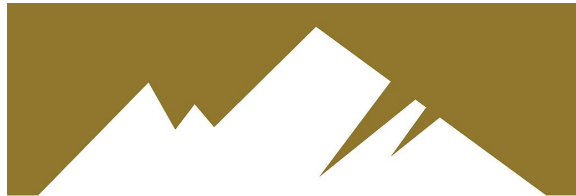
THE EASTERN SIERRA REGION

- UNITED STATES
- CALIFORNIA
- THE EASTERN SIERRA REGION

SUSTAINABLE RECREATION & TOURISM INITIATIVE

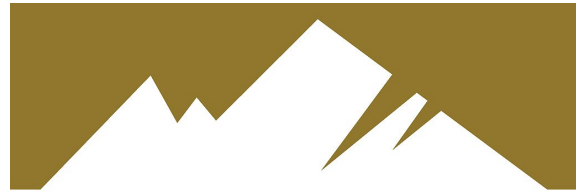
Funded by a grant from Proposition 68 and the Sierra Nevada Conservancy





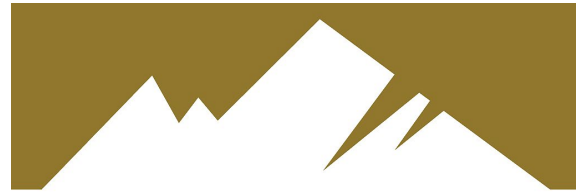
EASTERN SIERRA

Sustainable Recreation Partnership



EASTERN SIERRA

Sustainable Recreation Partnership



EASTERN SIERRA

Sustainable Recreation Partnership



EASTERN SIERRA

Sustainable Recreation Partnership

SUSTAINABLE RECREATION & TOURISM INITIATIVE

RECREATION STAKEHOLDERS

Funded by a grant from Proposition 68 and the Sierra Nevada Conservancy




SUSTAINABLE RECREATION & TOURISM INITIATIVE

VISITOR AUDIENCE



Funded by a grant from Proposition 68 and the Sierra Nevada Conservancy




SUSTAINABLE RECREATION & TOURISM INITIATIVE

CLIMATE RESILIENCE

Funded by a grant from Proposition 68 and the Sierra Nevada Conservancy

SUSTAINABLE RECREATION & TOURISM INITIATIVE

PROJECTS & FUNDING

Funded by a grant from Proposition 68 and the Sierra Nevada Conservancy

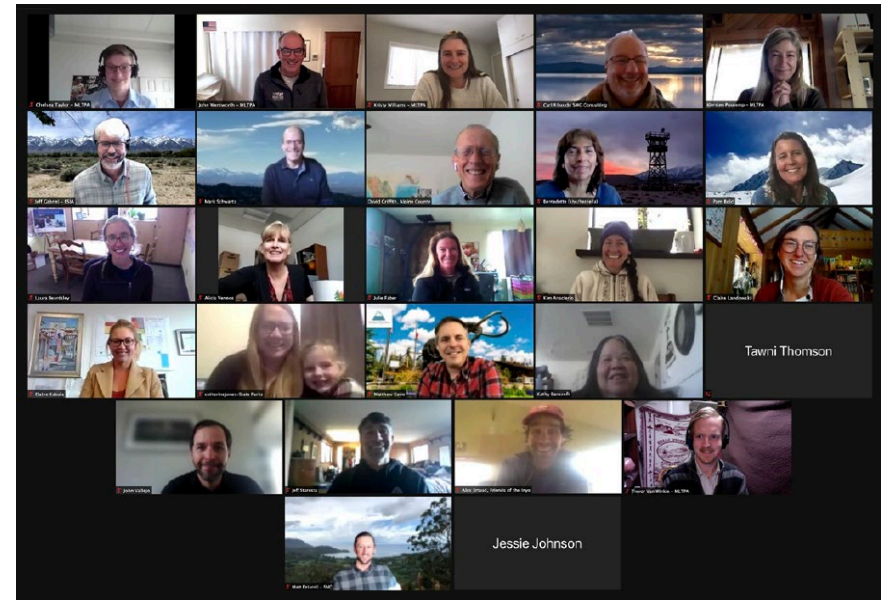





Oct. 17, 2019 - Eastern Sierra Communities – SRTI Kick Off



Oct. 17, 2023 - Eastern Sierra Communities – SRTI Kick Off



COVID-19 Pandemic

projects



filters



ideas



“Recreation Stakeholders” – Track #1

- Final Tally of Projects: 183
- Completed February 1, 2021



“Climate Adaptation and Resilience Assessment” – Track #2

- “Vulnerability Assessment” + “Natural Capital Assessment”
- Completion: April, 2021 / ESSRP Report Out May



“Visitor Audience” – Track #3

- “Visitor Connection Package” + 8 Working Group Meetings
- Completed February 22, 2021



“Projects and Funding” – Track #4

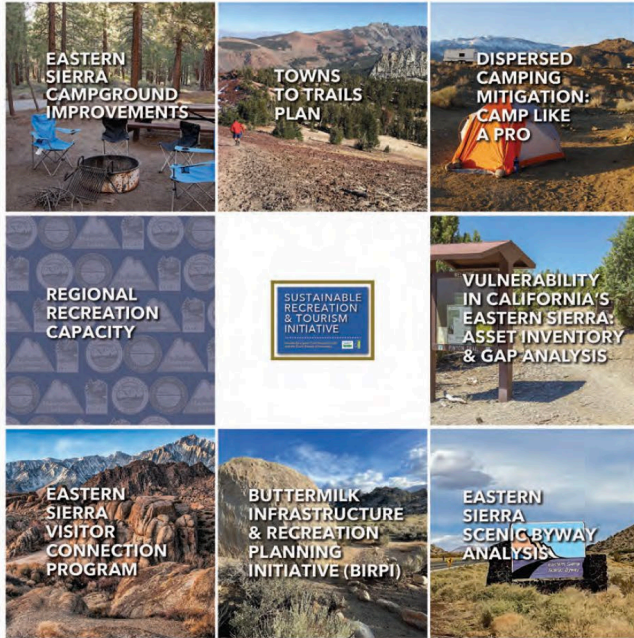
- Completed: January 2022



- Alpine County
- City of Bishop
- Bureau of Land Management
- CALTRANS
- ESCOG
- Inyo County
- Mono County
- HT National Forest, USFS
- Inyo National Forest, USFS
- National Park Service
- Town of Mammoth Lakes

SUSTAINABLE RECREATION & TOURISM INITIATIVE

PORTFOLIO OF PROJECTS



SUSTAINABLE RECREATION & TOURISM INITIATIVE

PORTFOLIO OF PROJECTS

WITH ESSRP PROSPECTUS FOR FUTURE INVESTMENTS



EASTERN SIERRA REGION

Sustainable Recreation Projects on Behalf of the Eastern Sierra Sustainable Recreation Partnership

20/21



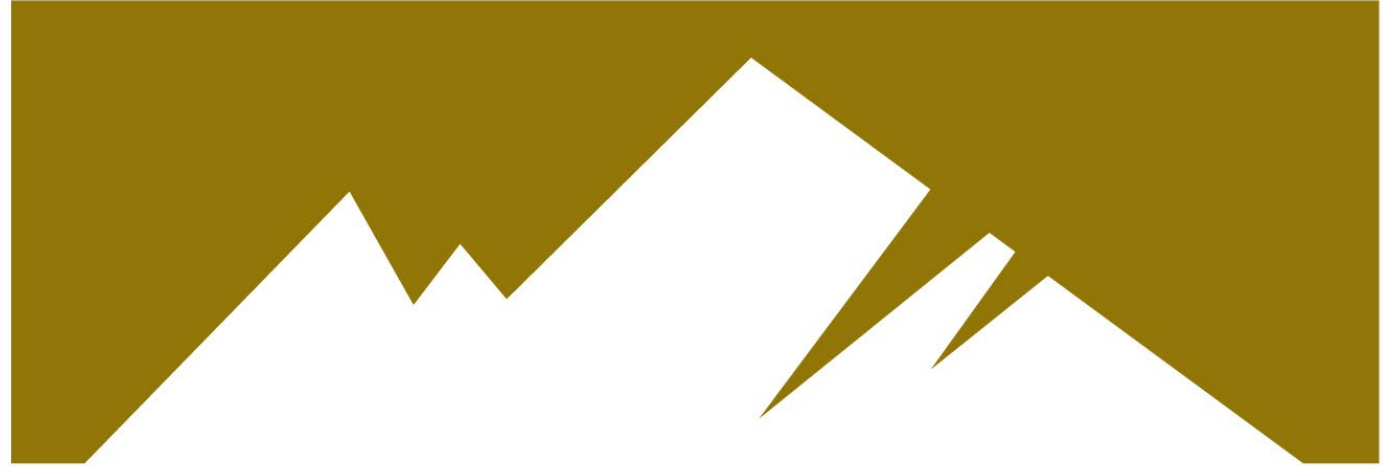
EASTERN SIERRA SUSTAINABLE RECREATION PARTNERSHIP

PROSPECTUS FOR FUTURE INVESTMENTS 2021-2031



PROJECT SELECTION & IMPLEMENTATION GUIDES

FEASIBILITY FUNDING REQUIREMENTS	REGIONAL LEADERSHIP GUIDING PRINCIPLES	PILLARS "THAT WHICH WE SHALL ALWAYS DO"
<p>SELECTED PROJECTS SHOULD:</p> <ul style="list-style-type: none"> Maintain existing assets Reflect strategic alignment Ensure full cost recovery Support operational capacity Demonstrate public demand and support Address environmental / climate / economic sustainability 	<p>WE WILL COLLABORATIVELY PRIORITIZE:</p> <ul style="list-style-type: none"> Maintenance of what is there near and long term Shared goals across boundaries Shared responsibility for long term asset management Financial or match contribution from all partner agencies Meeting local needs in a regional context Protection of the region's natural and cultural resources Best investment(s) for equity, inclusivity, diversity 	<p>PROJECT SELECTION MUST:</p> <ul style="list-style-type: none"> Operate within a cohesive local need and regional benefit approach Be driven by effective collaboration to achieve measurable results Manage visitor capacity to support responsible recreation Protect/Preserve public lands, including biological, and cultural resources



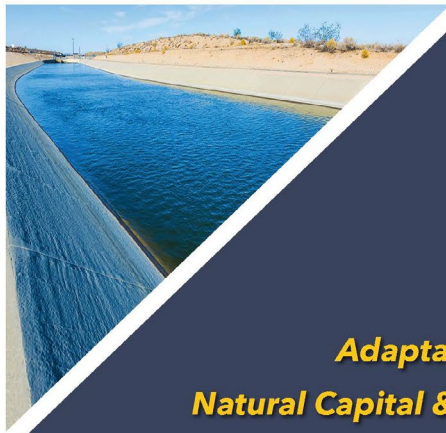
EASTERN SIERRA

Sustainable Recreation Partnership









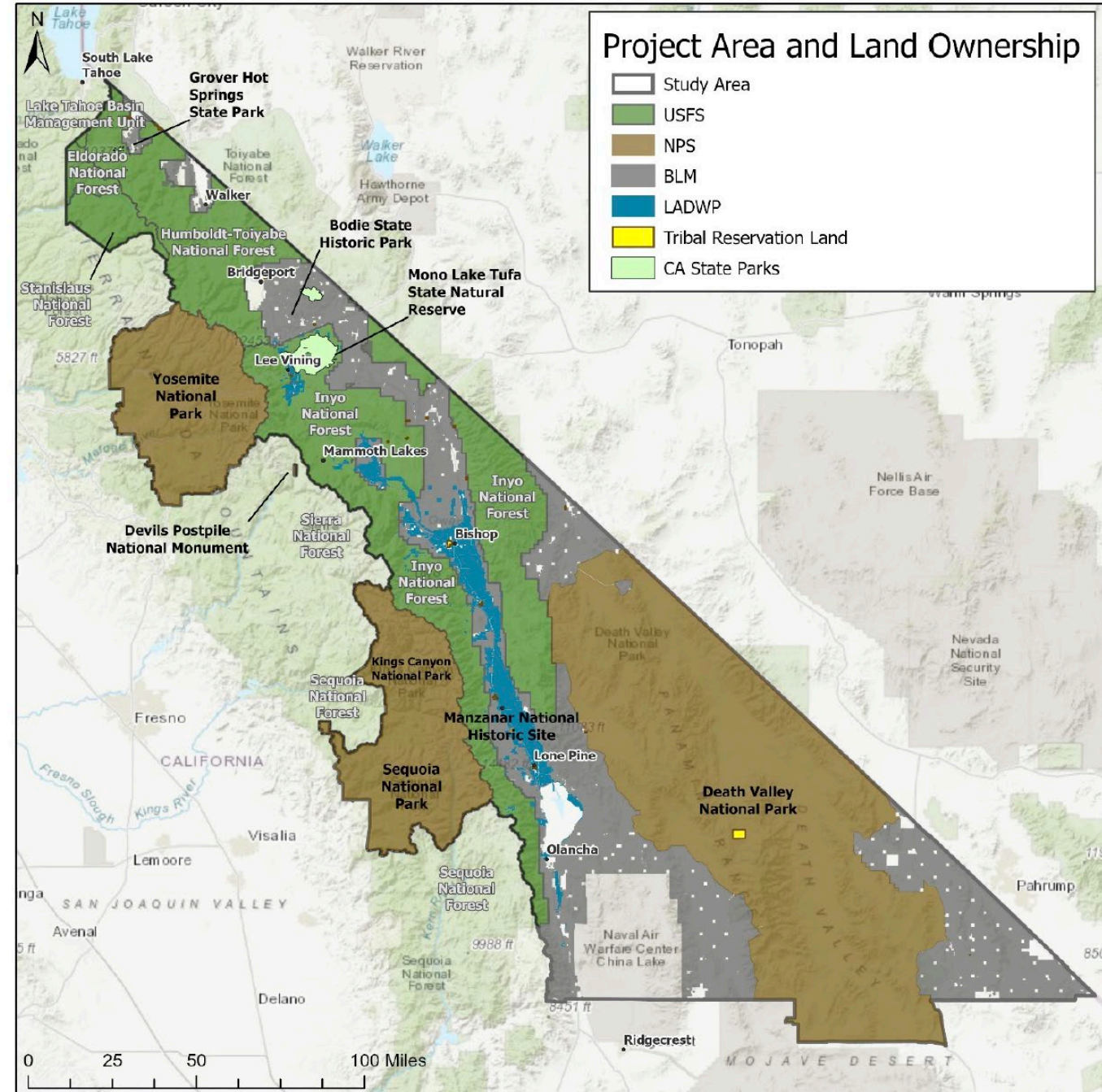
A CHANGING CLIMATE VULNERABILITY IN CALIFORNIA'S EASTERN SIERRA

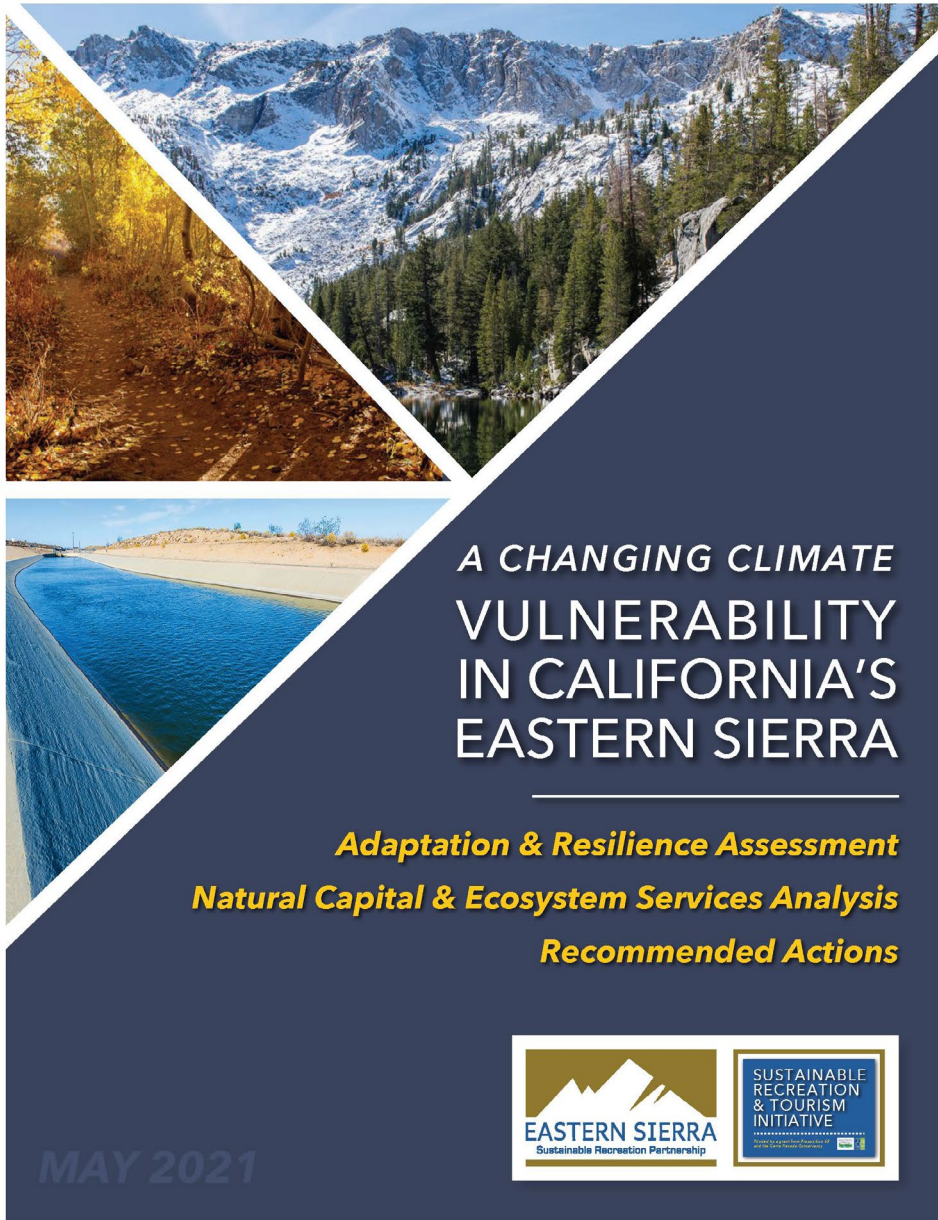
*Adaptation & Resilience Assessment
Natural Capital & Ecosystem Services Analysis
Recommended Actions*



MAY 2021

Figure 1. The Study Area





- Evaluates the impacts of climate change hazards on recreation and tourism.
 - What are the risks to the region?
 - Who and what is most vulnerable?
 - What are the impacts to the regional economy?
- Looks at risks to separate management units.

Study Area

Inyo, Mono, and
Alpine Counties

City of Bishop and
Town of Mammoth
Lakes

Humboldt-Toiyabe, El
Dorado, Lake Tahoe
Basin Management
Unit, Stanislaus, and
Inyo National Forests

Bureau of Land
Management lands

Death Valley,
Sequoia and Kings
Canyon, and
Yosemite National
Parks

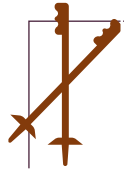
Devils Postpile
National Monument

Manzanar National
Historic Site

California state parks

LADWP lands

Recreational Activities



Backcountry skiing



Bicycling



Camping, backpacking, and primitive camping



Cross-country skiing



Downhill skiing



Driving for pleasure



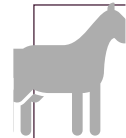
Fishing



Gathering forest products



Hiking/walking



Horseback riding



Hunting



Motorized trail activities



Other snow activities



Picnicking



Rock climbing



Viewing natural features and wildlife



Visiting historic sites and nature centers



Water-based activities

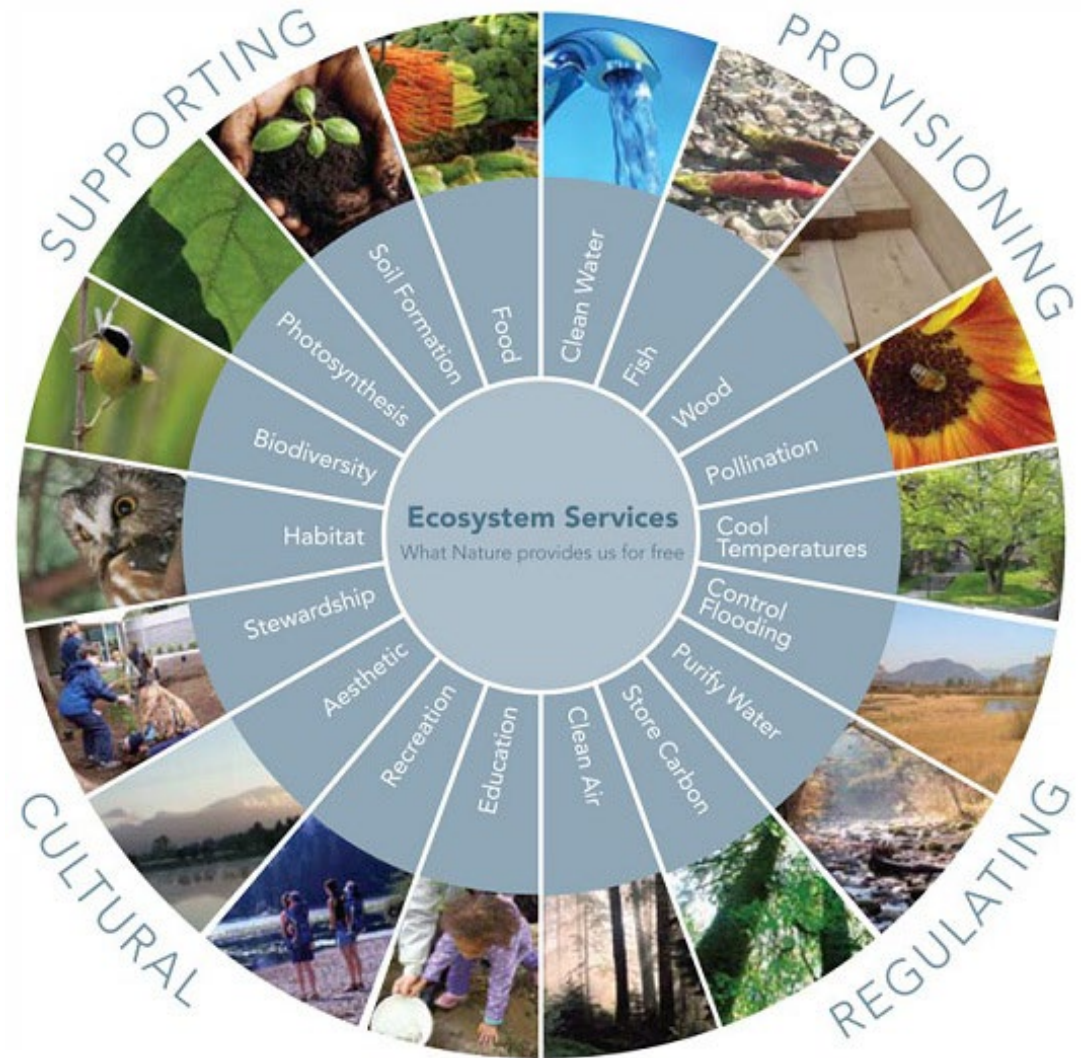


Wellness



Natural Capital Assessment - Results

- Ecosystem services provide approximately \$43.6 to \$190.9 billion in benefits, with an average value of \$95.4 billion, annually.
- Largest value from carbon storage and water resources.
- Desert shrubland and coniferous forest provide largest benefits.

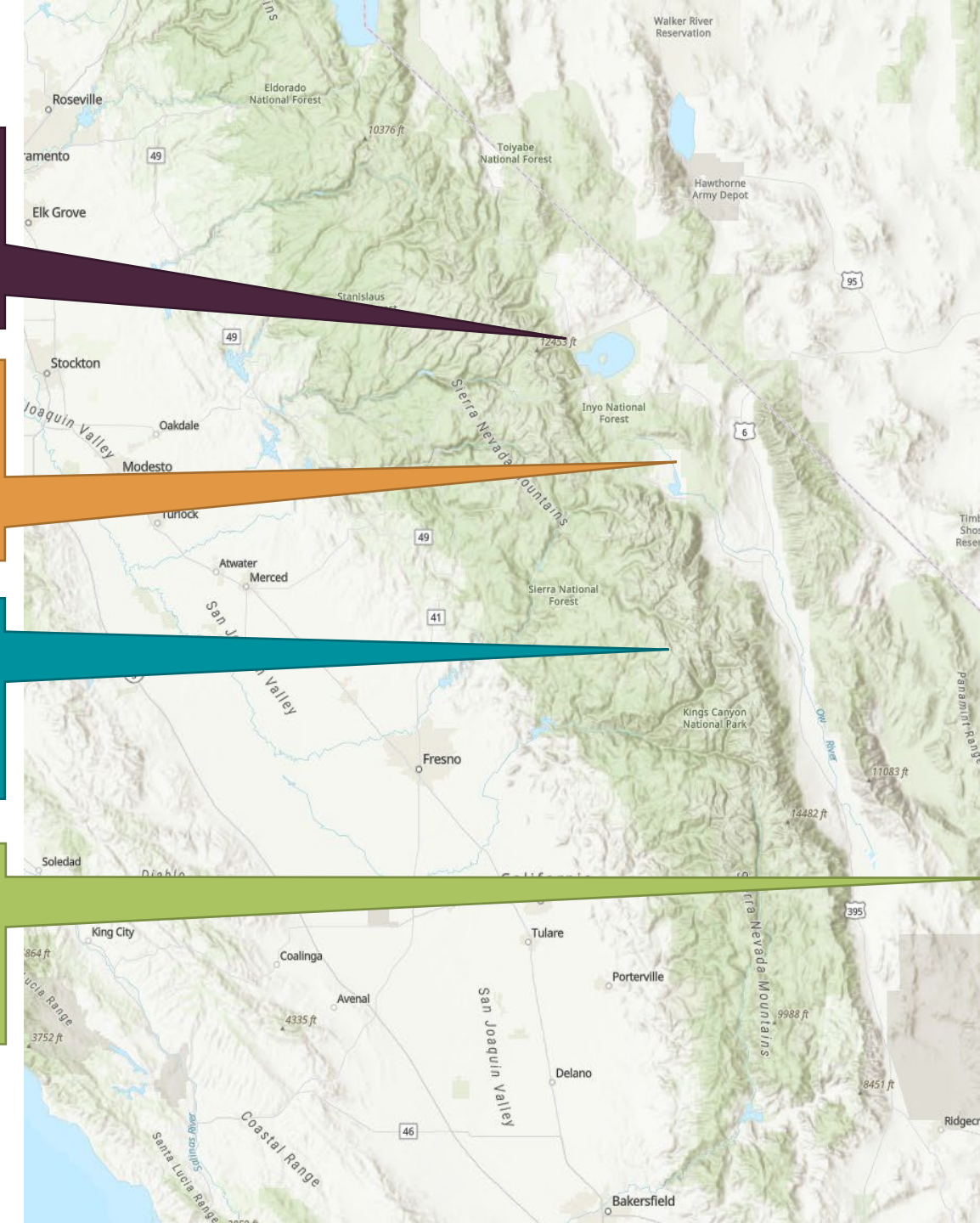


Wetlands:
\$5 billion

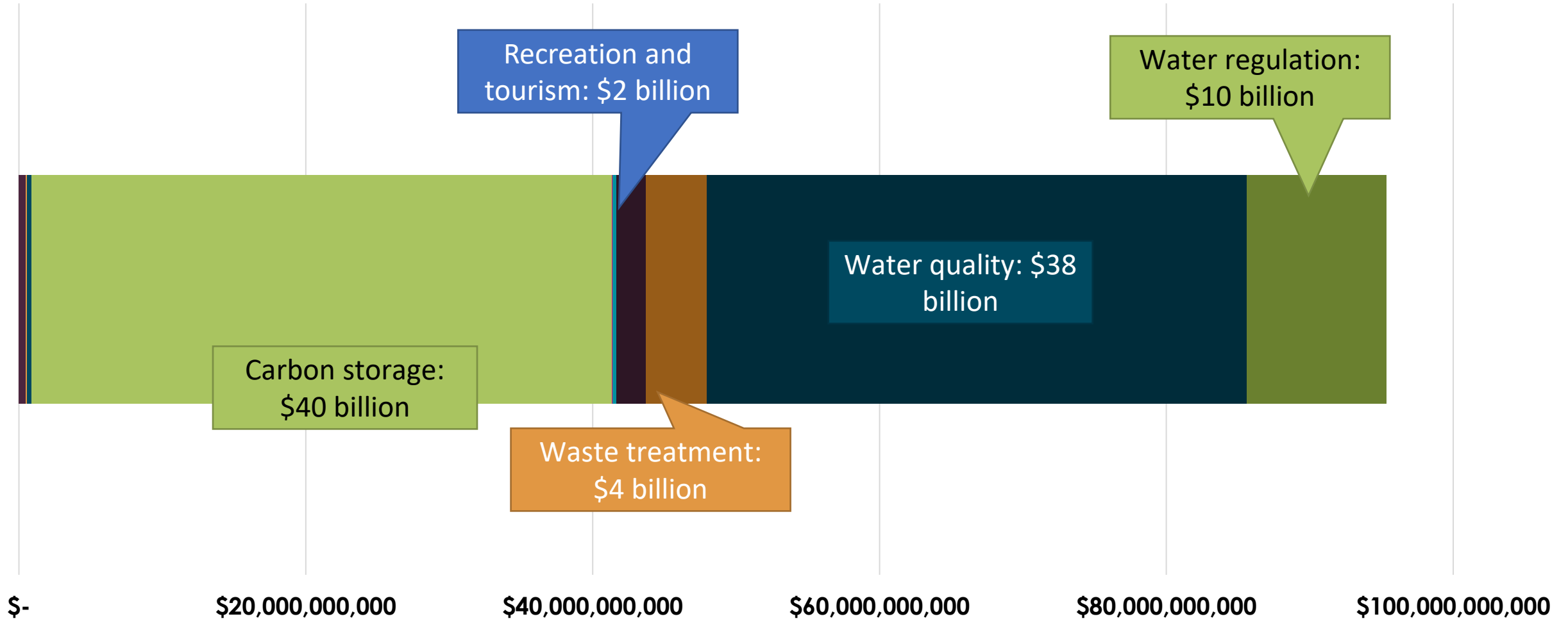
Shrubland:
\$33 billion

Conifer forests:
\$44 billion

Desert shrub:
\$5 billion



Natural Capital Assessment - Results





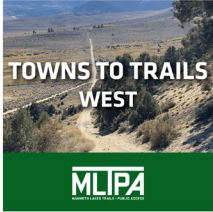
SIERRA WORKS
 AMADOR | ALPINE | CALAVERAS | INYO | MÓNO | MARIPOSA | TUOLUMNE

RICA
 RECOMMENDATIONS FOR IMPLEMENTATION
 AND COLLABORATIVE ACTION

Logos for California Jobs First Sierra Region, Sierra Focus Media, and MLPA Mammoth Lakes Trails - Public Access.



Industry Sector Coordinator for Sustainable Outdoor Recreation and Tourism





Roads/Trails

All roads and trails in the study area were categorized into three buckets, and each were given a weight based on the quality of trail experience they would provide

- soft surface trails - these are ideal for the trail experience we're looking to create
- unpaved roads - low-traffic backcountry roads have the potential to be great parts of the route, and they utilize existing infrastructure
- paved roads - these are the least ideal, but could be used in a pinch if no other viable route exists



Recreation Facilities & Landmarks

These are the features that we want to bring people to - campgrounds, cultural sites, and day-use areas. We designed our analysis to favor routes that bring people close to these features.



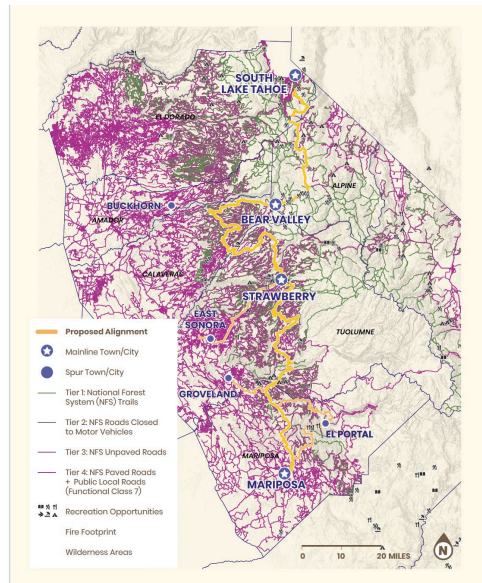
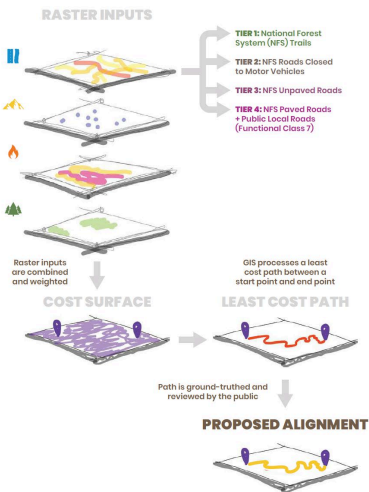
Fire Footprints

Fires impact infrastructure, landscapes, and built amenities along the trail route. We designed our analysis to consider recent wildfires. Areas with most recent fires were given least preference, areas with fires that occurred between 5-15 years ago were assigned a medium preference, and areas that have not been affected by fire in the last 20 years were given most preference.



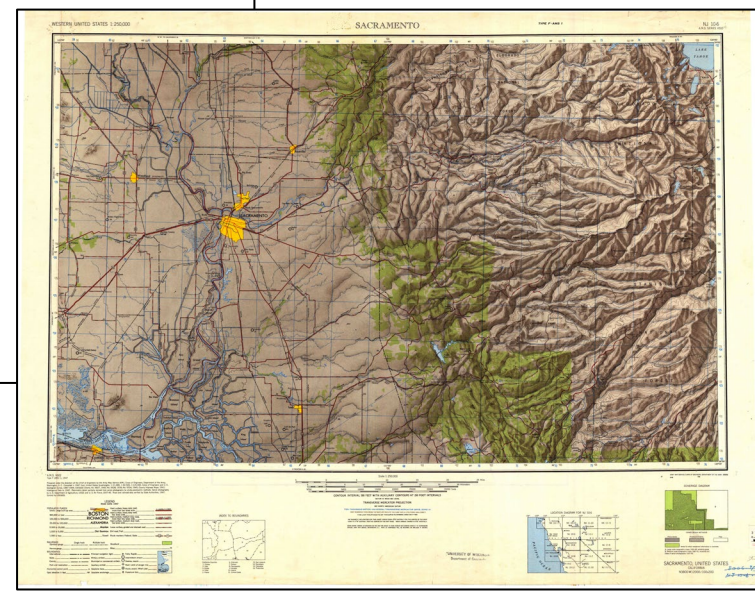
Wilderness Areas

Federal wilderness areas are areas where mechanized equipment like bicycles are not allowed. For this reason, we made sure our model avoided official wilderness areas.





FOR SALE BY U.S. GEOLOGICAL SURVEY, FEDERAL CENTER, SPRING CROFT ROAD, WASHINGTON, D.C.
 PLEASE CONTACT SURVEY FOR THE LATEST PUBLICATIONS LIST



U.S. GEOLOGICAL SURVEY



Questions

Introduction to Water-Resource Related Challenge Breakout Group Activity

- Following lunch, the second half of the Plenary will focus on generating ideas for scoping the Water Blueprint.
- For the first breakout group after lunch, we will have the room split into groups of three, corresponding to community members, planners, and water providers/utilities. Please help us rearrange the tables now into three clusters and join the table where your name is listed. Note that we will shuffle the seating again for the second breakout group activity.



Breakout Group Table Assignments

As you return from lunch, please help us rearrange the tables and chairs into three (3) groups:

Community (Table Cluster 1)

Facilitator: Emily Finnegan

Chris Woodard

Derek Delfino

Hannah Romero

John Wentworth

Lauren Hernandez

Lexi Boeger

Planners (Table Cluster 2)

Facilitator: Marisa Perez-Reyes

Amy Phillips

Dave Warren

Jeff Warren

Kameisha Nichols

Tim Pitt

Yung-Hsin Sun

Water Providers & Utilities (Table Cluster 3)

Facilitator: Kari Shively

John Marrs

Jon Money

Jordan Baxter

Kim Gustafson

Pat Dwyer

Pravani Vandeyar

Rebecca Guo



Lunch

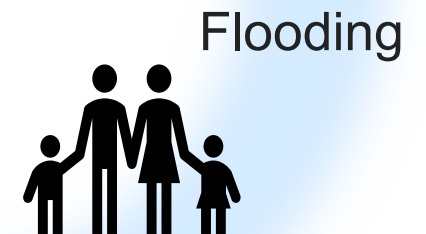
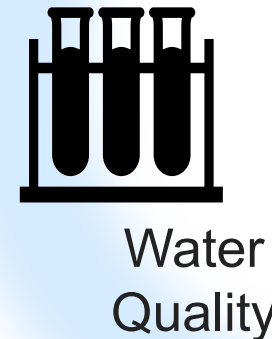
Please also add to our word cloud of **key characteristics of sustainable growth**. We'll continue to explore this topic during the rest of the Plenary.

We'll reconvene at 12:25.

Breakout Group Discussion:

How Water Purveyors, Planners, and Communities Experience Water-Resource Related Challenges in the West Slope

This breakout group exercise is to explore how the different types of perspectives represented at this Plenary experience the water-resource related challenges that were identified in the **2024 Water Resources Development and Management Plan**, for **water supply**, **water quality**, and **flooding**.



Water-Resource Related Challenges in the Tahoe Basin

Water Supply			Water Quality			Public Safety
Long-Term Water Supply-Demand Imbalance	Vulnerability During Droughts	Loss of Water Supply Due to Other Resource Management Practices	Long-Term Water Quality Impacts Due to Wildfires	Water Quality Impacts Due to Stormwater Runoff	Concerns Over Groundwater Contamination	Vulnerability to Flooding
<ul style="list-style-type: none"> The planned economic growth areas are covered by the existing service areas of major water purveyors, although many small water systems exist. The growth restrictions and land use in the Tahoe Regional Plan significantly reduce the risk of water supply-demand imbalance Emerging needs of using surface water due to groundwater contamination threat Uncertain outcomes of ongoing water right proceeding for the California's share of Truckee River 	<ul style="list-style-type: none"> The Tahoe Basin is less susceptible to extended droughts, relying on both surface water and groundwater. Existing drought ordinances do not provide coverage to the entire Tahoe Basin, although most areas have human consumption. Small water systems and domestic wells are susceptible to water shortage due to drought or other contributing factors including power shutoff during extreme weather conditions. 	<ul style="list-style-type: none"> Dense forests prevent snow from reaching the ground, resulting in reduced water supply available to the Tahoe Basin as groundwater via recharge. Stormwater is presently being managed as a hazard and for water quality compliance purposes but not as a potential resource for broader benefits. Water quality impacts from historical and emerging contamination in groundwater basin restricts existing water supply. 	<ul style="list-style-type: none"> Increasing frequency and intensity of wildfires result in both temporary and long-term water quality degradation. 	<ul style="list-style-type: none"> Stormwater runoff may impact water quality in Lake Tahoe, groundwater resource, and water bodies along highway corridors. 	<ul style="list-style-type: none"> Septic tanks are not prevalent in the Tahoe Basin, but leakage could affect groundwater quality. Long-term groundwater availability is less of a concern because runoff and snowmelt, even under climate change, are adequate for recharge. Historical contamination of Perchloroethylene, Methyl tert-butyl ether, uranium, and natural occurring arsenic, and emerging contamination of per-and polyfluoroalkyl substances. 	<ul style="list-style-type: none"> Riverine flooding is not a substantial threat in the Tahoe Basin; however, rain on snow often causes extensive street flooding in certain areas. Inflow and infiltration during flooding may overload the sewer system and prevent access sewer lines running through low-lying meadows.

A copy of this table is provided in your Workbook.

Level of Concern



West Slope Water Purveyors and Domestic Wells

- Highway/Major Road
- Rivers/Streams
- Receiving Water Body

Public Water System

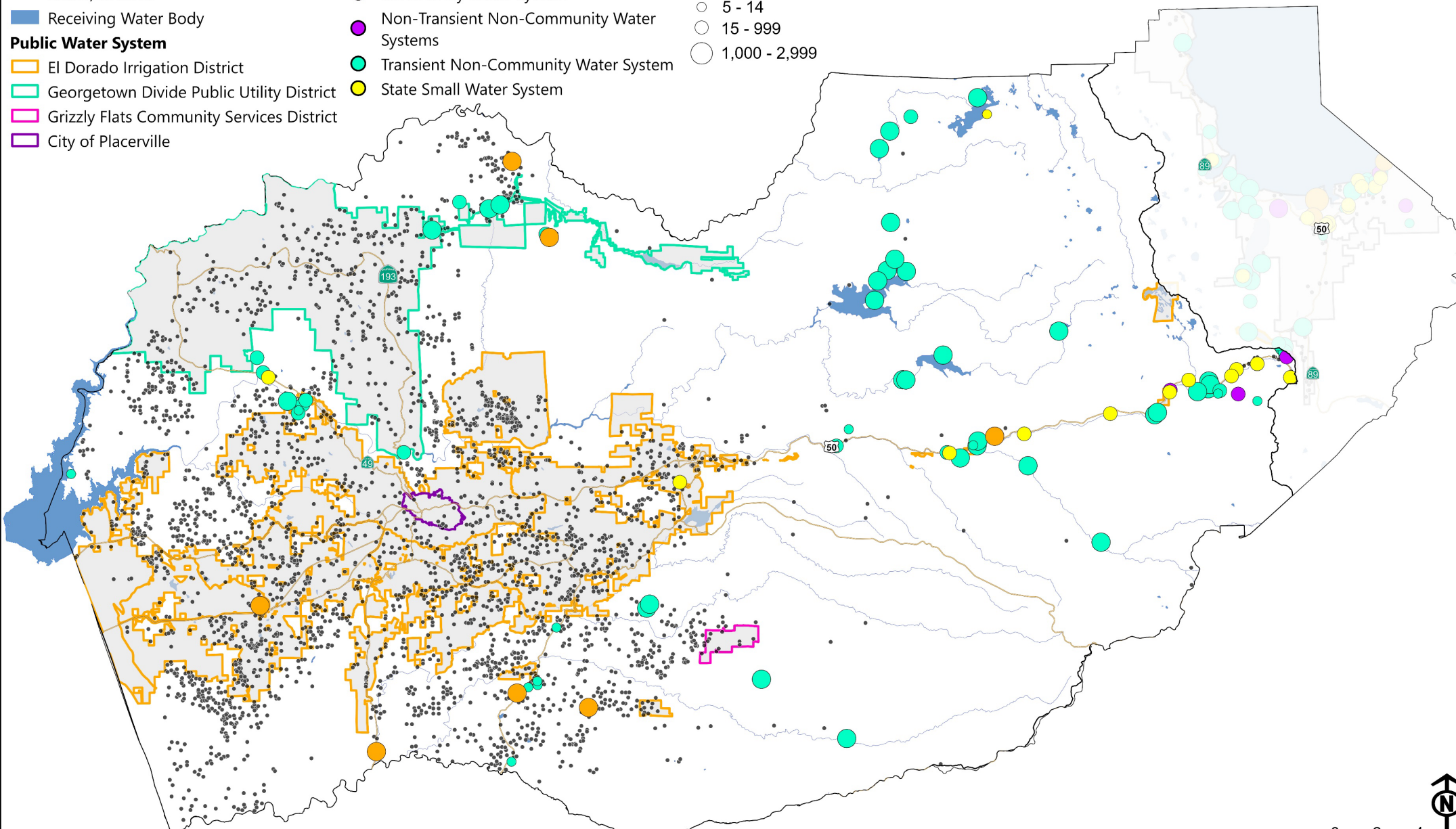
- El Dorado Irrigation District
- Georgetown Divide Public Utility District
- Grizzly Flats Community Services District
- City of Placerville

State Classification

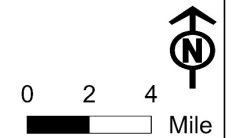
- Community Water System
- Non-Transient Non-Community Water Systems
- Transient Non-Community Water System
- State Small Water System

Service Connections

- < 5
- 5 - 14
- 15 - 999
- 1,000 - 2,999



A copy of this map is provided in your Workbook.



Water Use Planning Zones in El Dorado County

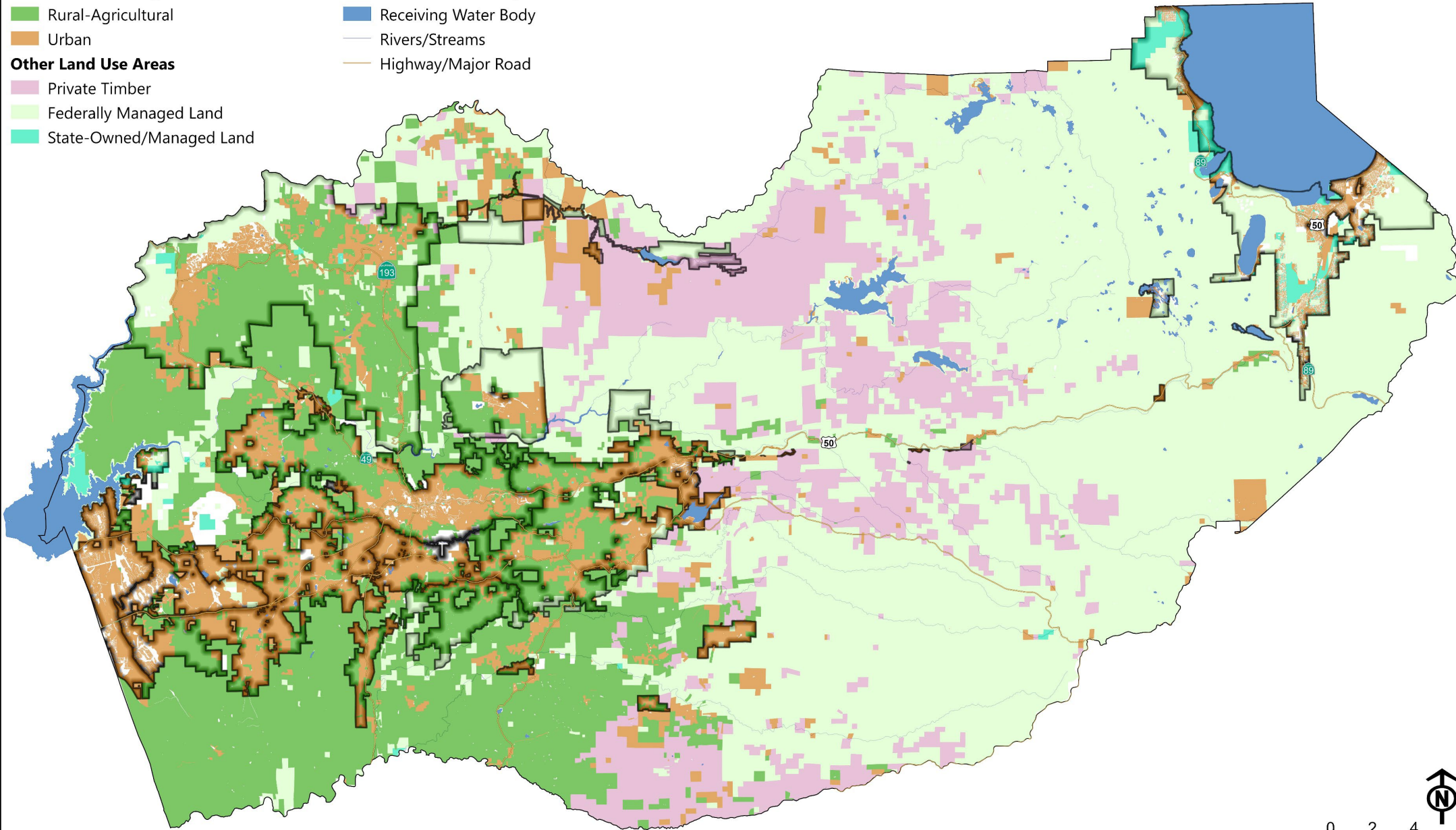
Water Use Planning Zones

- Rural-Agricultural
- Urban

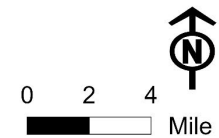
Other Land Use Areas

- Private Timber
- Federally Managed Land
- State-Owned/Managed Land

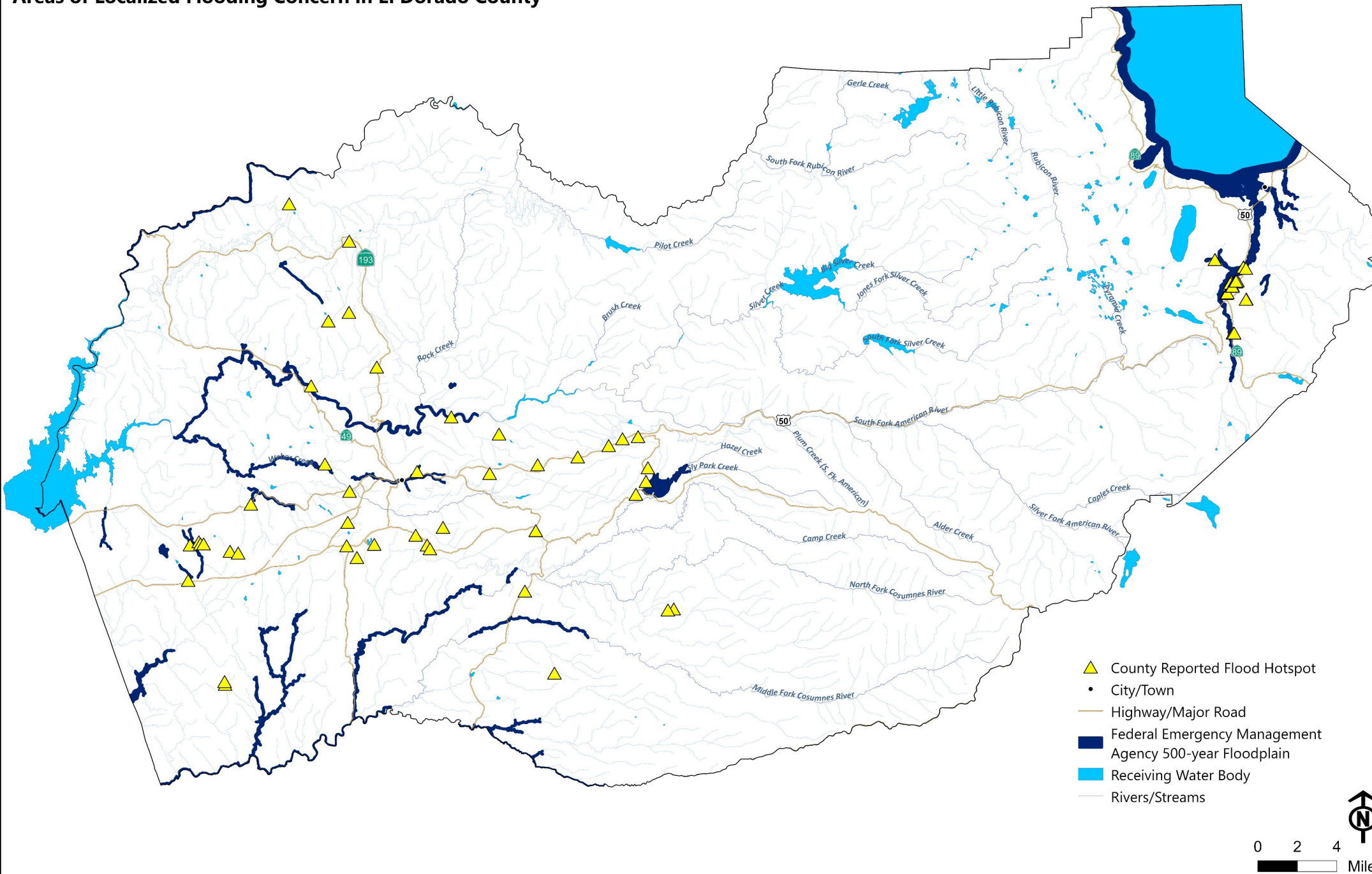
- Public Water Purveyor Service Area
- Receiving Water Body
- Rivers/Streams
- Highway/Major Road



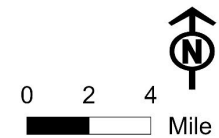
A copy of this map is provided in your Workbook.



Areas of Localized Flooding Concern in El Dorado County



- ▲ County Reported Flood Hotspot
- City/Town
- Highway/Major Road
- Federal Emergency Management Agency 500-year Floodplain
- Receiving Water Body
- Rivers/Streams



A copy of this map is provided in your Workbook.



Breakout Group Questions

In your groups, spend the next 35 minutes to discuss the following questions. Suggested timing considerations are provided here and in your handout.

1. [20 min] In your own words, how does your community/ organization/ agency **experience the water-resource related challenges or vulnerabilities** identified above and in the table on the next page? Why do these challenges/ vulnerabilities matter to you?
2. [13 min] What would you like the interests represented in the **other breakout groups** to know about the way you experience each of these types of challenges?

Start to wrap up discussion around 1:03 and confirm the most important discussion highlights you'd like your **facilitator to share** with the broader group.





Report-Outs

The Breakout Group Facilitators will summarize how their group experiences the water-resource related challenges.

We will add to the list of sustainable growth characteristics that we started earlier.



Mixing Up the Table Assignments for the Final Activity

For our last breakout group session, we'll have roughly 1/3 of your group stay at your current table cluster arrangement and the other 2/3 will rotate to opposite tables, as follows:

Table Cluster 1 (Remixed)

Facilitator: Emily Finnegan

Lexi Boeger

Hannah Romero

Jon Money

Jordan Baxter

Jeff Warren

Tim Pitt

Table Cluster 2 (Remixed)

Facilitator: Marisa Perez-Reyes

Amy Phillips

Dave Warren

Yung-Hsin Sun

Lauren Hernandez

Chris Woodard

John Marrs

Pravani Vandeyar

Table Cluster 3 (Remixed)

Facilitator: Kari Shively

Kim Gustafson

Pat Dwyer

Rebecca Guo

Derek Delfino

John Wentworth

Kameisha Nichols



Preparing for the Water Blueprint: Approaches to Addressing Water-Resource Challenges While Supporting a Sustainable Economy

This session is to reflect on (1) the characteristics of sustainable growth that we've identified together and (2) how the West Slope's water resource-related challenges are experienced, to generate ideas for what should be considered as part of the Water Blueprint development process to fill the need.

For this activity, we have included a list of existing plans and resources available in the county with your Workbook.



Breakout Group Questions

1. [15 min] What ideas do you have about **addressing our water resource challenges** while also **advancing sustainable economic growth**, based on your experience?
 - a. What **characteristics** of sustainable economic development should we be **keeping front of mind**, as we move toward developing a Water Blueprint and implementation roadmap for the West Slope?
2. [11 min] We have compiled a list of **existing plans and resources** in your Workbook. Are there any other existing plans or strategies we have missed?
 - a. **What do we need to know, going into the West Slope Blueprint development process**, that has not already been captured? Is there **additional information** you can provide that would be relevant to the plan, in terms of water supply? Water quality? Flooding?
3. [2 min] Select **one representative** to **share one idea** from the first question with the broader group.





Report-Outs

Select one representative from your breakout group to **share one idea** with the full group.





Closing Remarks

HANNAH ROMERO

Water Resources Principal

El Dorado Water Agency





Thank you!