
To:	Kenneth Payne, General Manager	From:	Maritza Flores Marquez, Yung-Hsin Sun
	El Dorado County Water Agency		Sacramento, CA (C Street)
File:	184031112	Date:	June 13, 2019

Reference: Small Public Water Systems for Human Consumption in El Dorado County

This technical memorandum (TM) documents the statistics of small public water systems for human consumption in El Dorado County. These statistics may change due to consolidation or additional approval. This TM has been reviewed by the Environmental Management Department (EMD), County of El Dorado for accuracy before its finalization.

For the purpose of this TM, small public water systems for human consumption include the following. (See the subsequent session for the definition of various terms.)

- Small community water systems
- Transient, noncommunity water systems
- Nontransient, noncommunity water systems

Although state small water systems and other non-regulated small water systems (with limited connections or use) may be for human consumption purposes, this TM includes information for reference only.

Definitions

Relevant definitions in the California Health and Safety Code (HSC) §116275 that can help understanding are provided below for reference. Note that these definitions listed below are arranged for improving understanding without changing the corresponding section references.

(h) “Public water system” means a system for the provision of water for human consumption through pipes or other constructed conveyances that has 15 or more service connections or regularly serves at least 25 individuals daily at least 60 days out of the year. A public water system includes the following:

- (1) Any collection, treatment, storage, and distribution facilities under control of the operator of the system that are used primarily in connection with the system.
- (2) Any collection or pretreatment storage facilities not under the control of the operator that are used primarily in connection with the system.
- (3) Any water system that treats water on behalf of one or more public water systems for the purpose of rendering it safe for human consumption.

(e) “Human consumption” means the use of water for drinking, bathing or showering, handwashing, oral hygiene, or cooking, including, but not limited to, preparing food and washing dishes.

(s) “Service connection” means the point of connection between the customer’s piping or constructed conveyance, and the water system’s meter, service pipe, or constructed conveyance. A connection to a system that delivers water by a constructed conveyance other than a pipe shall not be considered a connection in determining if the system is a public water system if any of the following apply:

Reference: Small Public Water Systems for Human Consumption in El Dorado County

- (1) The water is used exclusively for purposes other than residential uses, consisting of drinking, bathing, and cooking or other similar uses.
 - (2) The department determines that alternative water to achieve the equivalent level of public health protection provided by the applicable primary drinking water regulation is provided for residential or similar uses for drinking and cooking.
 - (3) The department determines that the water provided for residential or similar uses for drinking, cooking, and bathing is centrally treated or treated at the point of entry by the provider, a pass through entity, or the user to achieve the equivalent level of protection provided by the applicable primary drinking water regulations.
- (i) "Community water system" means a public water system that serves at least 15 service connections used by yearlong residents or regularly serves at least 25 yearlong residents of the area served by the system.
- (j) "Noncommunity water system" means a public water system that is not a community water system.
- (k) "Nontransient noncommunity water system" means a public water system that is not a community water system and that regularly serves at least 25 of the same persons over six months per year.
- (n) "State small water system" means a system for the provision of piped water to the public for human consumption that serves at least five, but not more than 14, service connections and does not regularly serve drinking water to more than an average of 25 individuals daily for more than 60 days out of the year.
- (o) "Transient noncommunity water system" means a noncommunity water system that does not regularly serve at least 25 of the same persons over six months per year.
- (z) "Small community water system" means a community water system that serves no more than 3,300 service connections or a yearlong population of no more than 10,000 persons.
- (b) "Department" means the state [water resources control] board.
- (g) "Person" means an individual, corporation, company, association, partnership, limited liability company, municipality, public utility, or other public body or institution.
- (t) "Resident" means a person who physically occupies, whether by ownership, rental, lease, or other means, the same dwelling for at least 60 days of the year.

To assist the water system classification and interpretation of the above legal definition, the State Water Resources Control Board (SWRCB) developed a decision tree (see **Attachment A**). **Table 1** shows the summary of the categories of water systems for human consumption based on the legal definitions and SWRCB's additional clarifications.

Reference: Small Public Water Systems for Human Consumption in El Dorado County

Table 1. Classifications of Water Systems for Human Consumption

Classification of Water Systems for Human Consumption	Qualifying Criteria (California Health and Safety Code Section 116275) ¹			
	Condition 1	Condition 2		Criteria
	Connections Served	Duration of Services	Individuals Served	
Public water systems				
a. Community water systems	15 or more	Year-long (or, 6 months or more per year)	25 persons and more	Condition 1 or Condition 2
b. Noncommunity water systems (<i>i.e., not community water systems</i>)				
(1). Nontransient noncommunity water systems	Up to 14	6 months or more per year	25 or more of the same persons	Condition 1 and Condition 2
(2). Transient noncommunity water systems	Up to 14	Less than 6 months per year; but 60 days or more	25 or more of the same persons	Condition 1 and Condition 2
Nonpublic water systems² (<i>i.e., not public water systems</i>)				
a. State small water systems	5 to 14	Less than 60 days per year	Average of 25 individuals daily or less	Condition 1 and Condition 2
b. Non-regulated small water systems	Up to 4	Less than 60 days per year	Average of 25 individuals daily or less	Condition 1 and Condition 2

¹ Including additional clarifications the State Water Resources Control Board use for water system classification (see Attachment A).

² The information in this table only concerns water systems for human consumption (*i.e., drinking water*). The State Water Resources Control Board may also label recycled water systems as nonpublic water systems.

The classification system is relatively complex. The following notes provide additional useful information when going through various records and references.

- “Nonpublic water system” is not legally defined, but it means a water system that does not meet the definition of a public water system.
- “Non-regulated small water systems” is not a legally defined term. It is used to cover the water systems that are up to 4 connections and serving an average of 25 individuals daily or less in less than 60 days per year.
- Many SWRCB records use certain notations that may be misinterpreted. For example, in their on-line water system database, NC is used to label transient, noncommunity water systems, and NP is used to label nonpublic water systems including recycled water systems that are not used for human consumption.
- Small community water systems as defined by HSC §116275(z) is not the scope of EMD’s current responsibility over its small water system program. See the next section for more detail.

June 13, 2019

Kenneth Payne, General Manager

Page 4 of 6

Reference: Small Public Water Systems for Human Consumption in El Dorado County

Regulatory Responsibilities

The SWRCB is the federally designated primary agency for the drinking water program in California, and Division of Drinking Water (DDW) regulates California's public drinking water systems and oversees a variety of drinking water-related activities. The 2015 [Safe Drinking Water Plan for California, Report to the Legislature](#) prepared by the SWRCB provides a complete description of the complex regulatory and management responsibilities associated with safe drinking water. This information is not repeated herein.

Pursuant to state law (HSC §116330), the SWRCB may delegate to the local county health officer the responsibility for enforcement of state laws and regulations for small public water systems (community and noncommunity water systems) that are less than 200 service connections in their jurisdiction and state small water systems through a local primacy delegation agreement. These counties are known as Local Primary Agency (LPA) counties, which include EMD providing the administration and enforcement as the Local Primary Agency on behalf of the DDW. It is important to emphasize that because the legislation does not require the SWRCB to delegate its regulatory authority over public water systems less than 200 connections to the LPA, there could be systems with less than 200 connections under direct jurisdiction of the SWRCB. Under the local primacy delegation agreement with the SWRCB, EMD also regulates the state small water systems.

System Consolidation

Small water systems can be less resilient to natural disasters, such as drought and fire, have more difficulty adjusting to regulatory changes, and may be subject to more financial constraints in infrastructure maintenance and replacement due to economies of scale and lack of staff. Thus, the SWRCB encourages water system partnerships and voluntary consolidation, and [Senate Bill 88 of 2015](#) further authorizes the SWRCB to require certain water systems that consistently fail to provide safe drinking water to consolidate with, or receive an extension of service from, another public water system.

The small water systems in El Dorado County have been through several consolidations recently. For example, the SWRCB records shows there were [5 systems in 2017](#) and [4 systems in 2018](#) in El Dorado County that completed the consolidation process; these records are summarized in **Table 2**. As the results of these efforts, EMD received a consolidation award from the DDW in 2017 (see right figure).



Reference: **Small Public Water Systems for Human Consumption in El Dorado County**

Table 2. Small Water Systems in El Dorado County that were Consolidated in 2017 and 2018

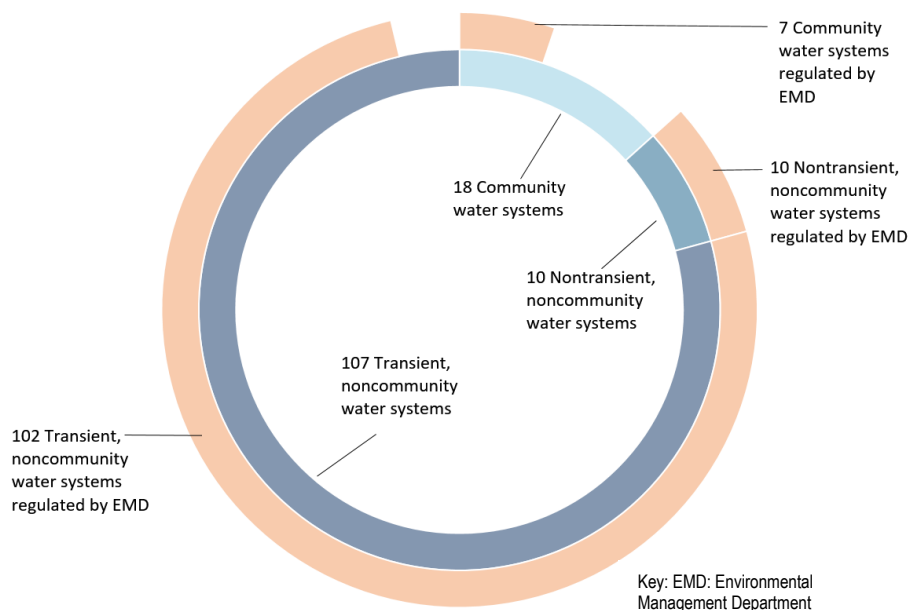
System No.	Water System Name	Type	Connections	Population	Inactivation Date	Receiving Water System
CA0910010	Placerville, City of – Sierra Golf & CC	C	264	320	6/20/2017	City of Placerville-Main
CA0900555	Matterhorn Inn	C	2	40	11/27/2017	South Tahoe Public Utility District
CA0900539	Sunray Tahoe Hotel	NC	3	120	7/20/2017	South Tahoe Public Utility District
CA0900548	Mark Twain Hotel	NC	21	25	8/9/2017	South Tahoe Public Utility District
CA0900636	Truckee Creek Cottages	NC	30	6	8/9/2017	South Tahoe Public Utility District
CA0900586	A & A Lake Tahoe Inn	NC	2	25	10/16/2018	South Tahoe Public Utility District
CA0900666	Sierra Arms Apartments	NP	1	21	10/23/2018	South Tahoe Public Utility District
CA0900673	Driftwood Apartments	C	1	40	11/6/2018	South Tahoe Public Utility District
CA0900211	Mother Lode River Center	NC	3	103	12/17/2018	Mother Lode Water System

Source: State Water Resources Control Board

Key: C: community water system; NC: transient, noncommunity water system; NP: nonpublic water system; in this case, it is a non-regulated water system.

Statistics of Public Water Systems in El Dorado County

As of June 2019, the SWRCB records show 135 public water systems, and 18 state small water systems in El Dorado County (see **Attachment B**). The 135 public water systems reflect the results of consolidation shown in **Table 2**. As an LPA, the SWRCB records also show that the EMD regulates 119 of the 135 public water systems and the 18 state small water systems in El Dorado County. **Table 3** provides a summary of statistics for public water systems in El Dorado County. The information is also shown in the figure to the right.



Reference: Small Public Water Systems for Human Consumption in El Dorado County

Table 3. Statistics of Public Water Systems in El Dorado County

Classification	Number of Public Water Systems		Number of Public Water System Regulated by EMD	
	Subtotal	Total	Subtotal	Total
Community Water Systems		18		7
Community water systems of major water purveyors ¹		8		0
El Dorado Irrigation District	3		0	
City of Placerville	1		0	
Georgetown Divide Public Utility District	1		0	
Grizzly Flats Community Services District	1		0	
South Tahoe Public Utility District	1		0	
Tahoe City Public Utility District	1		0	
Community water systems (others)		10		7 ²
Noncommunity water systems		117		112
Nontransient, noncommunity water systems	10		10	
Transient, noncommunity water system	107		102 ³	
Grand Total		135		119

Key: EMD: Environmental Management Department, County of El Dorado

¹ Only the main El Dorado Irrigation District system and the systems of the City of Placerville, Georgetown Divide Public Utility District, and South Tahoe Public Utility District are not small community water systems.

² EMD does not regulate Lakeside Park Association, Lukins Brothers Water Company, and Tahoe Keys Water Company water systems with more than 200 connections.

³ EMD does not regulate 5 State Park campgrounds (4 in the Lake Tahoe area, and 1 in the Folsom Lake State Recreation Area).

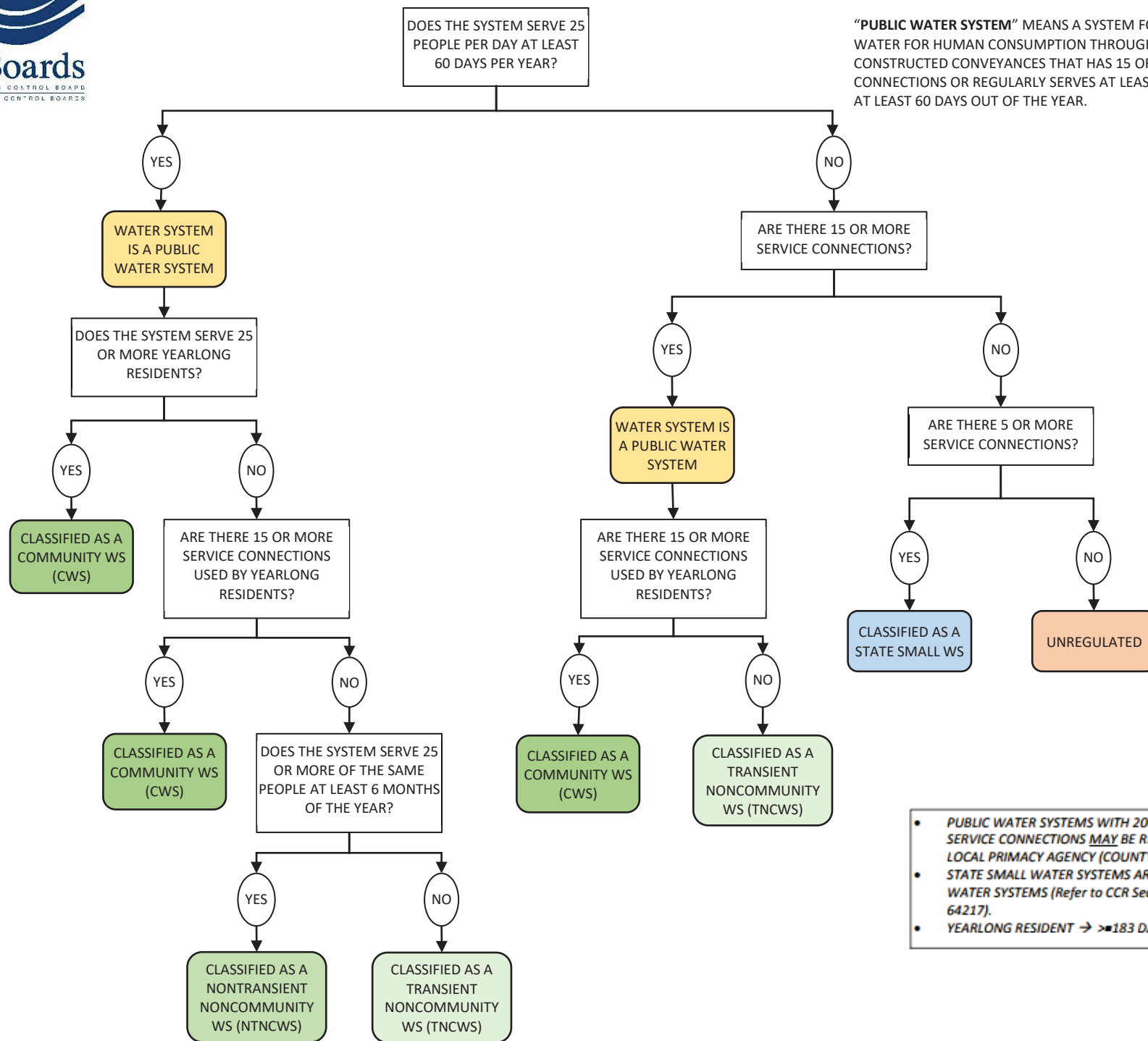
- Attachments:
- A: State Water Resources Control Board's Decision Tree for Classification of Water Systems
 - B: Active Public Water Systems in El Dorado County (Source: State Water Resources Control Board)
 - C: Active Small Public Water Systems and State Small Water Systems Overseen by Environmental Management Department, County of El Dorado (Source: State Water Resources Control Board)

- c. Greg Stanton, County of El Dorado
- Jeffrey Warren, County of El Dorado
- Tiffany Schmid, County of El Dorado



DECISION TREE FOR CLASSIFICATION OF WATER SYSTEMS

“PUBLIC WATER SYSTEM” MEANS A SYSTEM FOR THE PROVISION OF WATER FOR HUMAN CONSUMPTION THROUGH PIPES OR OTHER CONSTRUCTED CONVEYANCES THAT HAS 15 OR MORE SERVICE CONNECTIONS OR REGULARLY SERVES AT LEAST 25 INDIVIDUALS DAILY AT LEAST 60 DAYS OUT OF THE YEAR.



- PUBLIC WATER SYSTEMS WITH 200 OR LESS SERVICE CONNECTIONS MAY BE REGULATED BY A LOCAL PRIMACY AGENCY (COUNTY).
- STATE SMALL WATER SYSTEMS ARE NOT PUBLIC WATER SYSTEMS (Refer to CCR Sections 64211-64217).
- YEARLONG RESIDENT → >=183 DAYS/YEAR

California Health and Safety Code §116275

- (e) “Human consumption” means the use of water for drinking, bathing or showering, hand washing, oral hygiene, or cooking, including, but not limited to, preparing food and washing dishes.
- (h) “Public water system” means a system for the provision of water for human consumption through pipes or other constructed conveyances that has 15 or more service connections or regularly serves at least 25 individuals daily at least 60 days out of the year. A public water system includes the following:
- (1) Any collection, treatment, storage, and distribution facilities under control of the operator of the system that are used primarily in connection with the system.
 - (2) Any collection or pretreatment storage facilities not under the control of the operator that are used primarily in connection with the system.
 - (3) Any water system that treats water on behalf of one or more public water systems for the purpose of rendering it safe for human consumption.
- (i) “Community water system” means a public water system that serves at least 15 service connections used by yearlong residents or regularly serves at least 25 yearlong residents of the area served by the system.
- (j) “Noncommunity water system” means a public water system that is not a community water system.
- (k) “Nontransient noncommunity water system” means a public water system that is not a community water system and that regularly serves at least 25 of the same persons over six months per year.
- (n) “State small water system” means a system for the provision of piped water to the public for human consumption that serves at least five, but not more than 14, service connections and does not regularly serve drinking water to more than an average of 25 individuals daily for more than 60 days out of the year.
- (o) “Transient noncommunity water system” means a noncommunity water system that does not regularly serve at least 25 of the same persons over six months per year.
- (s) “Service connection” means the point of connection between the customer’s piping or constructed conveyance, and the water system’s meter, service pipe, or constructed conveyance.

http://leginfo.legislature.ca.gov/faces/codes_displaySection.xhtml?lawCode=HSC§ionNum=116275

Attachment C

Active Small Public Water Systems and State Small Water Systems Overseen by Environmental Management Department, County of El Dorado

Source: State Water Resources Control Board

Date: June 13, 2019

Water System Number	Water System Name	State Type	DS Class	Max TP Class	Fee Code	Service Connections	Population
901217	BEAR STATE WATER WORKS	C	T2			35	100
900422	CRYSTAL CAVES MHP	C	NR		SC	40	112
900404	OAKLANE MOBILE VILLAGE, LLC.	C	NR		SC	35	75
900308	QUINETTE SERVICE CORP WATER	C	NR	T2		52	79
900300	KYBURZ MUTUAL WATER SYSTEM	C	T2	T2	SC	120	150
900112	CANDLELIGHT VILLAGE MUTUAL WATER CO.	C	NR			32	32
900102	GOLD BEACH PARK	C	NR		SC	50	100
901281	30 MILESTONE TRACT #1	NC	NR		XS	14	30
901260	CODY WATER ASSOCIATION	NC	T2	T2		55	110
901250	GERLE CREEK SUMMER HOMES	NC	NR			41	82
901249	WENCH CREEK CAMPGROUND	NC	NR		N1	102	250
901248	WRIGHTS LAKE CAMPGROUND, PACIFIC RANGER	NC	NR		N1	28	75
901247	YELLOW JACKET CAMPGROUND	NC	NR			152	350
901246	PENINSULA RECREATION AREA	NC	NR		N1	161	350
901244	STUMPY MEADOWS CAMPGROUND	NC	NR		N1	62	100
901243	SILVERFORK CAMPGROUND	NC	NR		N1	35	70
901239	SAND FLAT CAMPGROUND	NC	NR		N1	29	50
901232	RED FIR GROUP CAMPGROUND WATER SYST	NC	NR			1	25
901230	LOON LAKE CAMPGROUND	NC	NR			45	125
901229	ICE HOUSE CAMPGROUND	NC	NR			84	200
901228	GERLE CREEK CAMPGROUND	NC	NR		N1	50	125
901223	CLEVELAND CORRAL REST AREA	NC	NR			2	75
901222	CHINA FLAT CAMPGROUND	NC	NR			20	75
901219	CAPPS CROSSING CAMPGROUND	NC	NR			11	25
900665	HEAVENLY GONDOLA	NC	D2		N1	4	520
900664	SIERRA TAHOE WEST BOWL	NC	D1		N1	3	1900
900663	SOUTH ECHO SUMMIT TRACT CIVIC	NC	NR		XS	13	30
900658	SIERRA TAHOE GRANDVIEW	NC	NR		N1	1	500
900656	RAINBOW TRACT WATER ASSOC	NC	NR		N1	23	25
900654	BALDWIN BEACH	NC	NR		N1	14	200
900652	ECHO CHALET INC	NC	NR		N1	6	43
900651	SIERRA PINES CAMP	NC	NR		N1	67	220
900650	ECHO LAKE CAMP	NC	NR		N1	11	120
900643	MT RALSTON PROPERTIES ASSC INC	NC	NR		N1	79	100
900641	FALLEN LEAF MUTUAL WATER CO	NC	NR	T2	N1	104	100
900638	PHILLIPS TRACT MUTUAL WATER COMPANY	NC	NR		N1	54	84
900631	CAMP CONCORD	NC	NR		N1	10	69
900629	AMERICAN LEGION TRACT RESORT ASSOC	NC	NR		N1	34	65
900624	VILLA TAHOE CONDOMINIUMS	NC	NR		N1	4	44
900623	TAHOE TRAVEL INN	NC	NR		N1	3	125
900621	SUMMIT PINES APARTMENTS	NC	NR		N1	1	25
900618	BRYANT CREEK/FIR TRACTS MWA	NC	NR		N1	45	126
900603	ECHO PEAK WATER ASSOCIATION	NC	NR		N1	26	73
900592	DEERFIELD LODGE @ HEAVENLY	NC	NR		N1	2	46
900591	NORTH ECHO SUMMIT WATER ASSOCIATION	NC	NR		N1	42	118
900587	HEAVENLY SKI SKY DECK	NC	D2		N1	2	520
900585	GINGER MOUNTAIN LODGE	NC	NR		N1	3	25
900582	ALPENROSE INN	NC	NR		N1	2	40
900581	NATIONAL 9	NC	NR		N1	3	63
900579	MIDWAY INN	NC	NR		N1	2	40
900578	AMERICAN CONSERVATION EXPERIENCE	NC	NR		N1	1	45
900576	ALPINE INN & SPA	NC	NR		N1	5	100
900565	TAHOE VALLEY LODGE	NC	NR		N1	3	42
900564	KING'S IV CONDOMINIUMS	NC	NR		N1	4	60
900562	HEATHER LAKE ROAD TRACT	NC	NR		N1	13	39
900560	FLL MUTUAL	NC	NR	T2	N1	41	100
900554	THE TRAILHEAD	NC	NR		N1	1	60
900553	BEVERLY LODGE	NC	NR		N1	2	25
900551	ALDER INN	NC	NR		N1	3	60
900549	TAMARACK PARK HOMEOWNERS ASSOC	NC	NR		N1	28	92
900542	BAYVIEW CAMPGROUND	NC	NR		N1	2	100
900536	ECONO LODGE INN & SUITES	NC	NR		N1	7	100
900535	PINEWOOD INN	NC	NR		N1	1	70
900525	ECHO ROAD GROUP WATER ASSOC	NC	NR		N1	20	40

¹Per Jeffrey Warren (Environmental Management Department, El Dorado County), three additional state small water systems were added to the list in June of 2019.

Attachment C

Active Small Public Water Systems and State Small Water Systems Overseen by Environmental Management Department, County of El Dorado

Source: State Water Resources Control Board

Date: June 13, 2019

Water System Number	Water System Name	State Type	DS Class	Max TP Class	Fee Code	Service Connections	Population
900523	CASCADE MUTUAL WATER COMPANY	NC	NR		N1	32	60
900516	CAMP SACRAMENTO	NC	NR	T2	N1	20	250
900515	ANGORA LAKES RESORT	NC	NR		N1	14	400
900511	CATHEDRAL WATER ASSOCIATION	NC	NR		N1	26	25
900507	STANFORD SIERRA CAMP	NC	NR	T2	N1	58	295
900506	SPRING CREEK TRACT ASSOCIATION	NC	NR		N1	137	389
900505	CAMP SHELLY	NC	NR		N1	15	200
900502	PYRAMID CREEK TRAILHEAD	NC	NR		N1	3	500
900423	O.A.R.S., INC #70	NC	NR		N1	1	100
900419	BACCHI RANCH WATER SYSTEM #1	NC	NR			6	100
900417	RIVERS BEND RESORT	NC	NR			10	64
900412	POINT PLEASANT CAMPGROUND	NC	NR			4	42
900411	LOTUS PUB	NC	NR		N1	7	500
900401	CAMP FLEMING --- CAMPGROUND	NC	NR		N1	1	240
900320	BRIGANCE ROADHOUSE	NC			N1	2	50
900319	MT AUKUM SQUARE	NC	NR		N1	4	100
900317	LAKE CHIQUITA MUTUAL WATER COMPANY	NC	NR		N1	17	20
900316	SMUD POWERHOUSE (HEALTH)	NC	NR		N1	52	100
900314	ICE HOUSE RESORT (HEALTH)	NC	NR		N1	5	100
900311	MOUNTAIN CAMP II	NC	NR		N1	3	300
900307	OLSON TRACT WATER ASSOCIATION	NC	NR	T2		8	25
900306	FORWARD BIBLE CONFERENCE	NC	NR		N1	8	107
900303	SILVERFORK WATER ASSOCIATION	NC	NR			23	36
900301	SILVERFORK MUTUAL WATER SYS.	NC	NR		N1	41	4
900219	ALL OUTDOORS ADVENTURE TRIPS	NC	NR		N1	4	100
900216	THE PUB WATER SYSTEM	NC	NR		N1	2	100
900214	WOLF CREEK CAMPGROUND	NC	NR		N1	45	150
900213	PIONEER PARK WATER SYSTEM	NC	NR		N1	4	100
900212	HENNINGSEN LOTUS PARK WATER SYSTEM	NC	NR		N1	9	1000
900208	PIPI CAMPGROUND WATER SYSTEM	NC	NR		N1	51	150
900206	CAMP CHIQUITA CAMPGROUND (HEALTH)	NC	NR		N1	44	100
900205	CAMP LOTUS WATER SYSTEM	NC	NR		N1	6	1000
900204	NUGGET CAMPGROUND	NC	NR			6	1000
900120	SCIOTS TRACT WATER SYSTEM	NC	T2	T2		79	223
900118	GRIZZLY'S PUB & GRUB	NC	NR			3	35
900116	MOTHER LODGE WATER SYSTEM	NC			XS	1	60
900113	LEONI MEADOWS CAMP	NC	NR			17	450
900110	COYOTE JUNCTION WATER SYSTEM	NC	NR		N1	3	50
900109	DRU BARNER CAMPGROUND	NC				8	294
900108	GOLD COUNTRY BAPTIST CHURCH	NC	NR		N1	2	275
900107	GRAY'S MART & GAS (HEALTH)	NC	NR		N1	3	100
900105	SOMERSET HOUSE WATER SYSTEM	NC	NR		N1	4	100
900104	PIONEER BIBLE CHURCH	NC	NR		N1	1	250
900103	SILVERFORK STORE WATER SYSTEM	NC	NR		N1	3	50
900100	CAMP FLEMING --- LODGE	NC	NR			2	100
900660	HEAVENLY SKI CREEK STATION	NTNC	D1		SP	5	1000
900659	SIERRA TAHOE MAIN LODGE	NTNC	D1	T1	N1	5	1940
900649	SOUTH SHORE RECREATION AREA	NTNC	D1		SP	123	3300
900646	AL TAHOE ELEM/STMS (WATER SYS)	NTNC	D1		SP	6	1300
900529	STATION HOUSE INN	NTNC	D1		SP	4	310
900410	LATROBE ELEMENTARY SCHOOL	NTNC	NR		SP	2	65
900309	MOUNTAIN CREEK SCHOOL	NTNC	NR		SP	5	125
900304	SILVERFORK SCHOOL (HEALTH)	NTNC	NR		SP	1	25
900210	MILLERS HILL SCHOOL	NTNC	NR		SP	7	120
900111	PIONEER ELEMENTARY SCHOOL EDC	NTNC	NR		SP	5	250
901285	UPPER 34 MILESTONE TRACT	SSWS	NR		XS	12	24
901282	30 MILESTONE TRACT #2	SSWS	NR		XS	15	20
901252	PYRAMID TRACT WEST WATER SYSTEM	SSWS	T1		XS	12	20
900669	MORGAN CENTER	SSWS	NR			5	16
900667	PINE CONE TRAILER PARK	SSWS	NR		XS	9	18
900637	HUCKLEBERRY RIDGE ESTATES MUTUAL WATER	SSWS	NR		XS	10	14
900616	47 MILESTONE/ASPEN CREEK TRACT	SSWS	NR		XS	10	24
900615	STANDFORD HILL TRACT	SSWS	NR		XS	10	20
900595	LOWER EMERALD BAY TRACT	SSWS	NR		XS	9	24

¹Per Jeffrey Warren (Environmental Management Department, El Dorado County), three additional state small water systems were added to the list in June of 2019.

Attachment C

Active Small Public Water Systems and State Small Water Systems Overseen by Environmental Management Department, County of El Dorado

Source: State Water Resources Control Board

Date: June 13, 2019

Water System Number	Water System Name	State Type	DS Class	Max TP Class	Fee Code	Service Connections	Population
900588	HEAVENLY VALLEY TRAILER PARK	SSWS	NR		XS	14	20
900566	HUNTER WATER SUPPLY SYSTEM	SSWS			XS	7	14
900559	DELLA CELLA COTTAGES	SSWS	NR		XS	7	17
900557	EMERALD PINES RESORT CABINS	SSWS	NR		N1	8	10
900518	ASPEN CREEK WATER ASSOCIATION	SSWS	NR		XS	12	12
900106	INDIAN DIGGINGS SCHOOL	SSWS	NR			1	17
900672 ¹	MEADOW PARK VILLAGE	SSWS				13	22
900663 ¹	SOUTH ECHO SUMMIT TRACT CIVIC	SSWS	NR		XS	13	30
900531 ¹	BRYSON CREEK WATER ASSOCIATION	SSWS	NR		XS	10	50

¹Per Jeffrey Warren (Environmental Management Department, El Dorado County), three additional state small water systems were added to the list in June of 2019.